

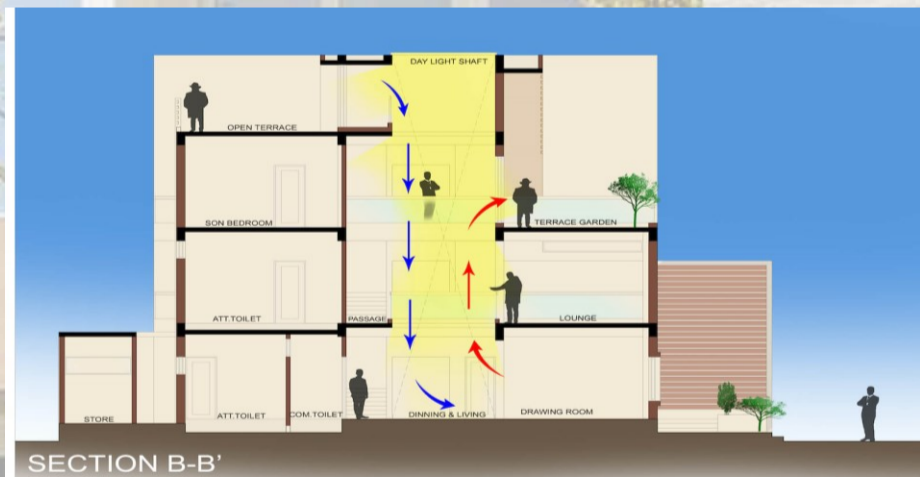
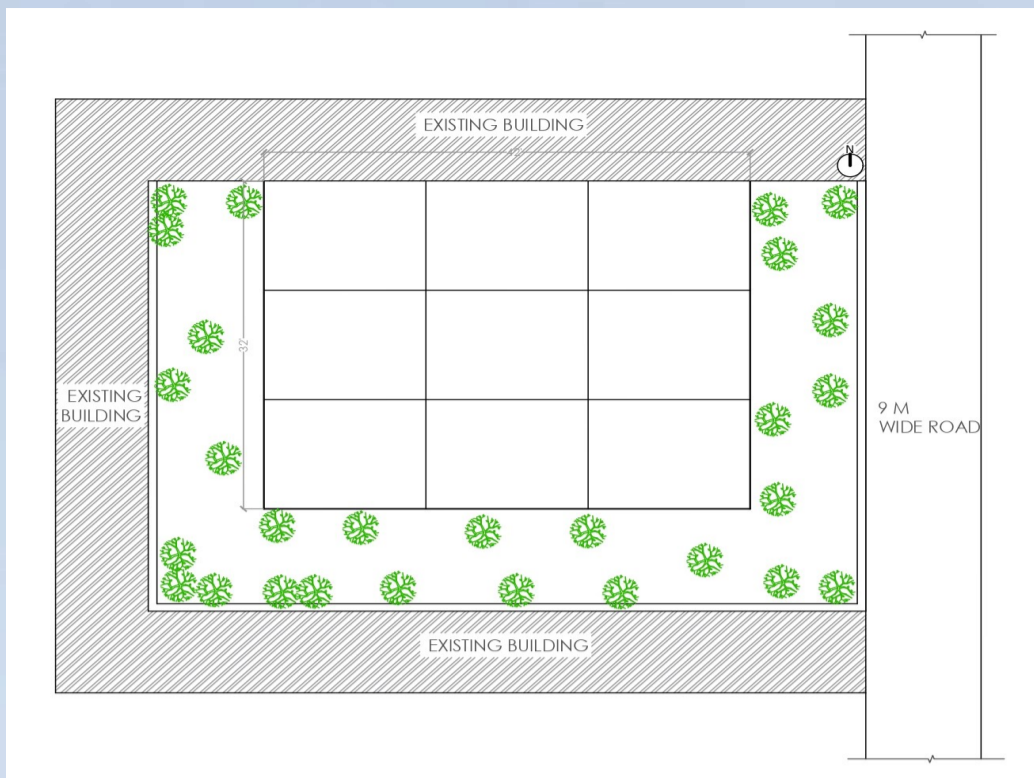
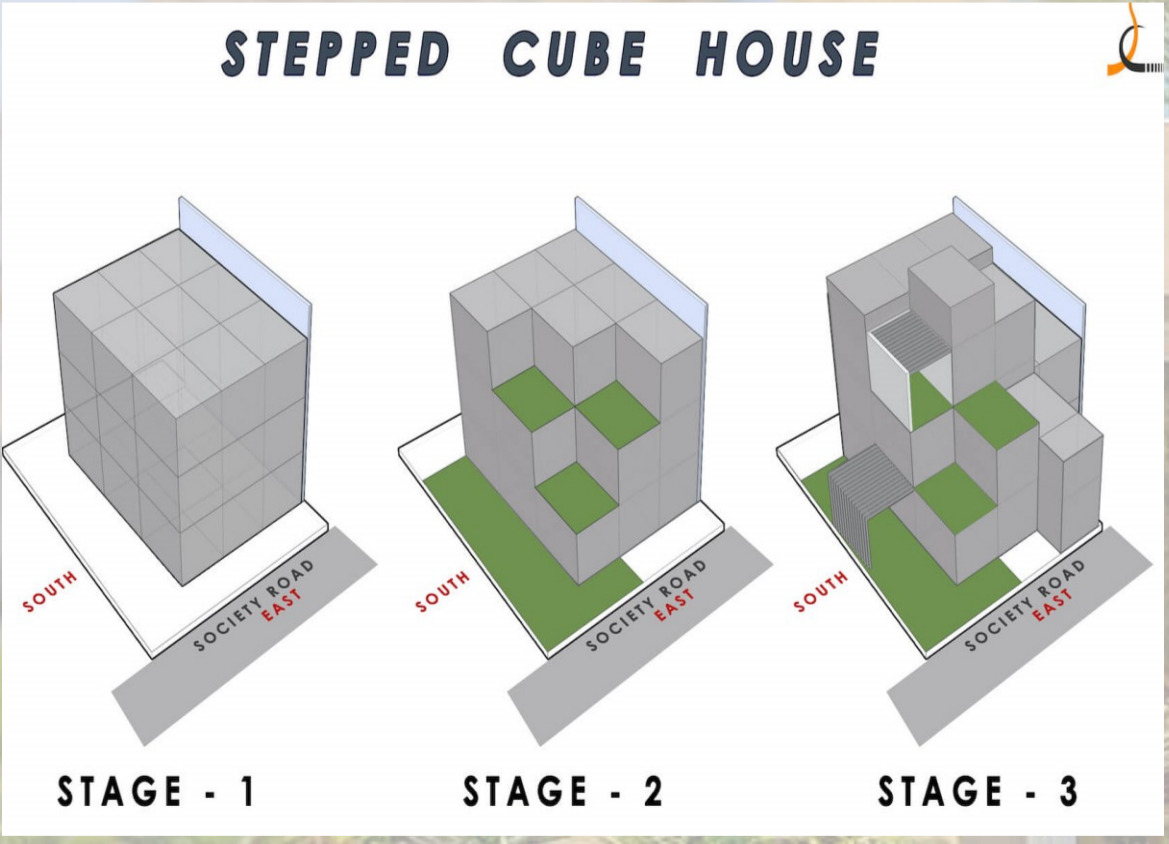
# LITERATURE CASE STUDY

Project Name : Stepped Cube House  
 Location : Paldi , Ahmedabad Gujarat  
 Year : 2017  
 Architecture Firm : Shayona Consultant  
 Built Up Area : 3200 Sqft  
 Site Area : 2600 Sqft

**CONNECTIVITY –**  
 6 km away from railway station .  
 4.1 km away from bus stand .  
 12 km away from airport.

**CLIMATE-**  
 Macro Climate- Hot Semi-arid  
 Climate  
 Avg.Temperature-28°C  
 Maximum Temperature- 26°C  
 Minimum Temperature -35°C  
 Annual Precipitation – 782 mm

## CONCEPT



## DESIGN FEATURES :

The parking was discarded as a common space was already provided by the society. The planning of the house is done based on the below factors:

- The sun path that moves from front - east to the rear side that tilts towards south
- Air flow from south to north
- Vaastu considerations
- Density of developments around the site and a large common wall on the north



The Planning Of The Elevation Is The Derivate Of The Concept Of Stepped Cube House. The Walls Are Pulled To Create A Dynamic Effect From Which Cubes Are Protruding The House Follows A Grid Pattern With The House Divided Into 9 Sections According To Vastu .

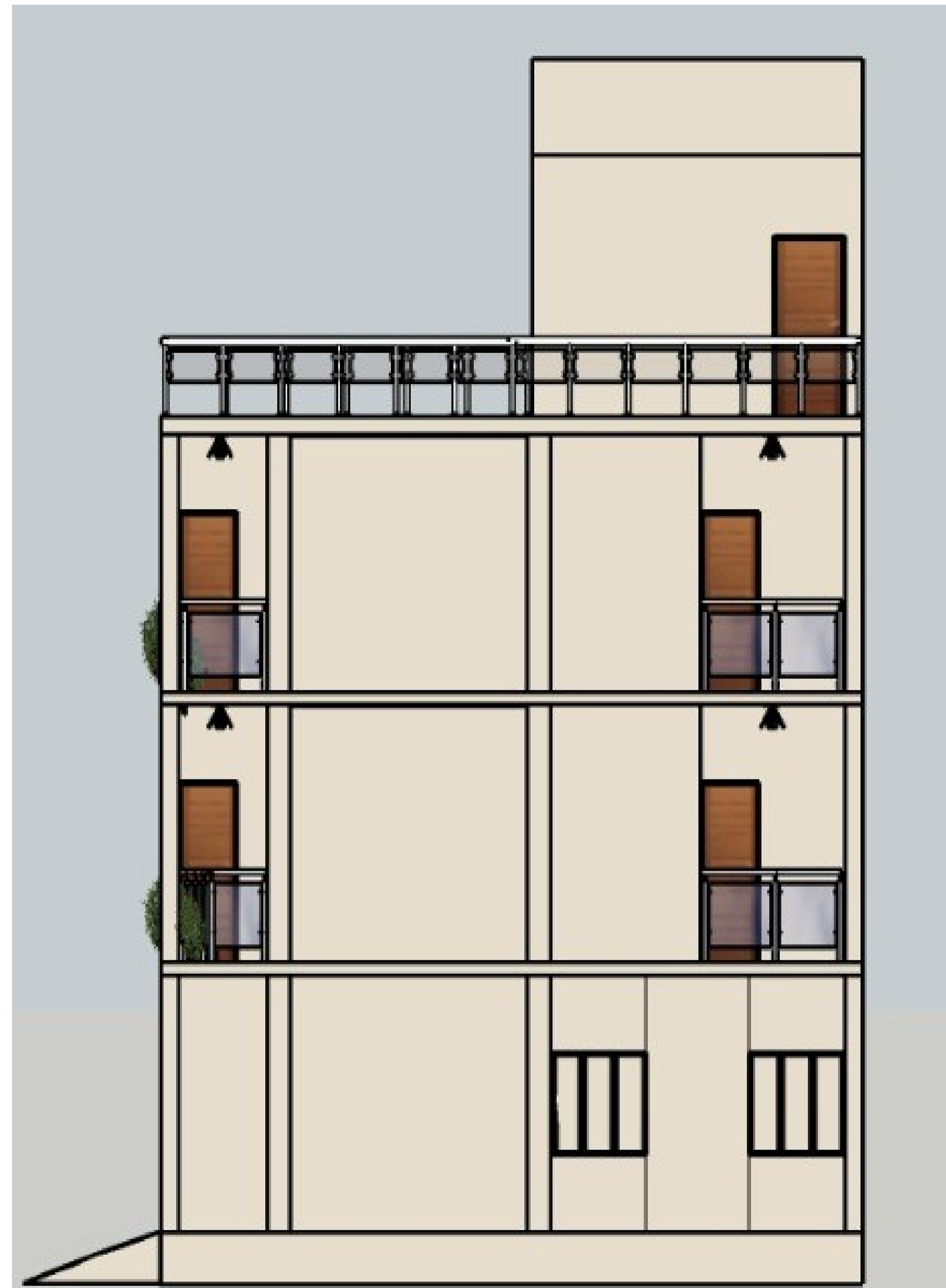


## CUBE HOUSE DESIGN

SAHSI JAIN  
 0223AR231008  
 III SEM  
 H.C.A.T.P



FRONT ELEVATION

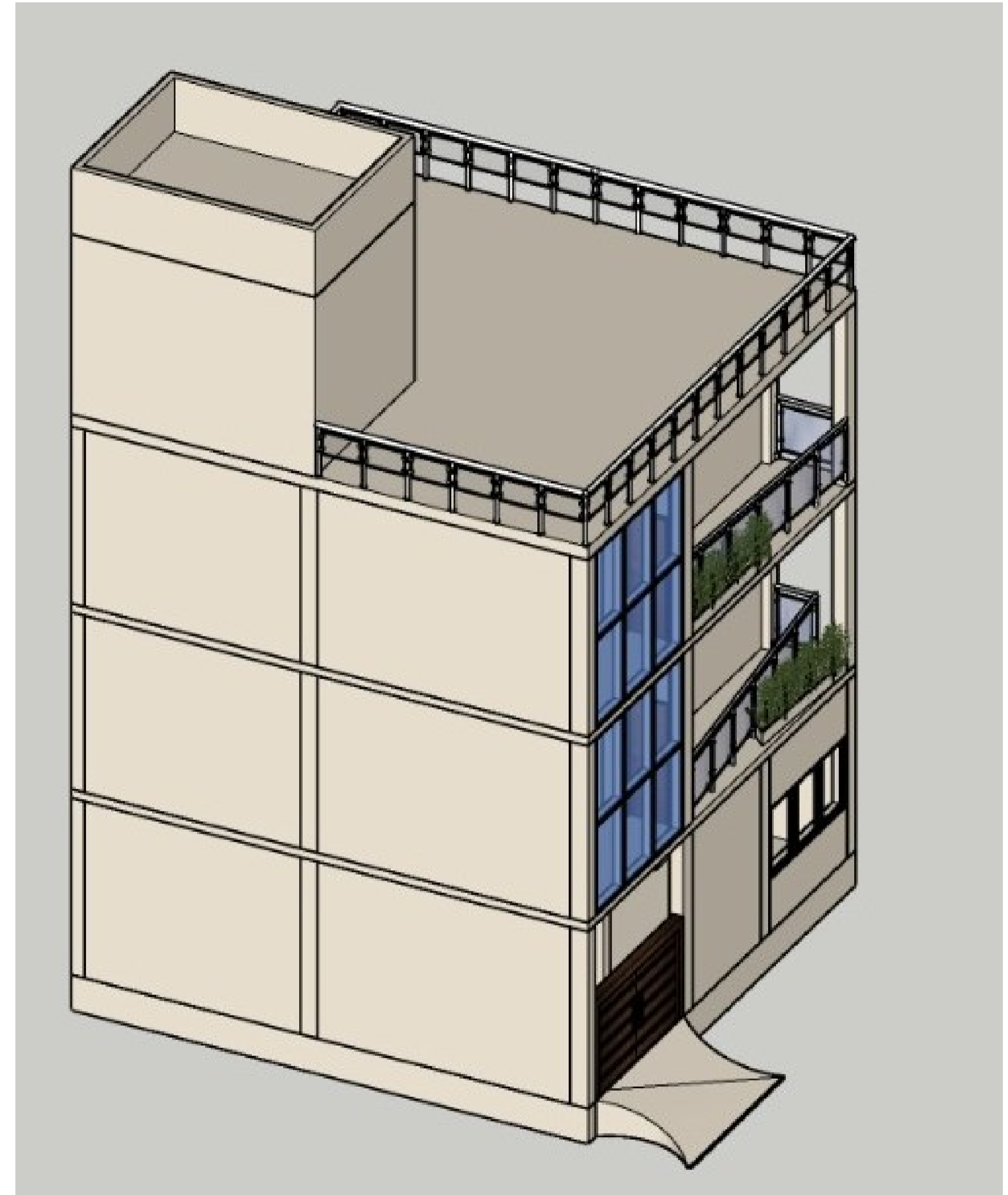


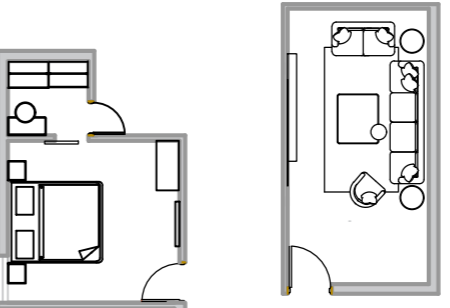
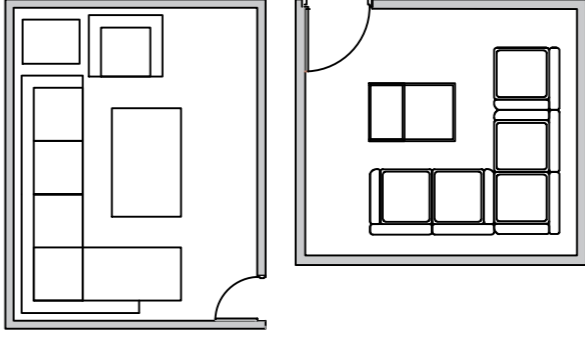
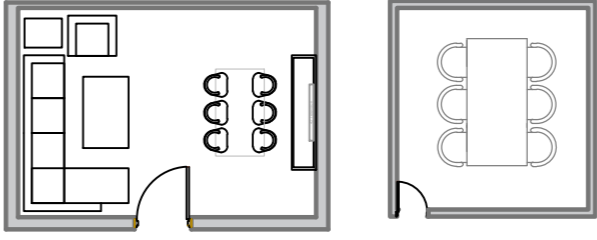
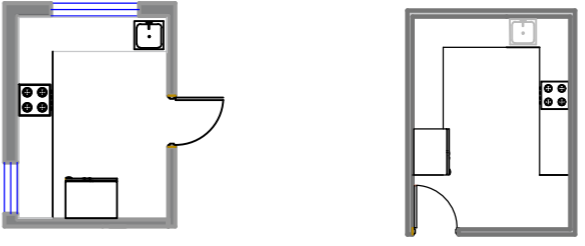
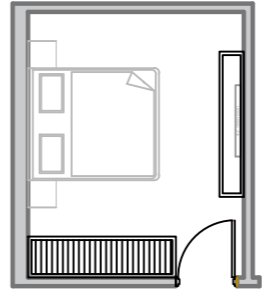
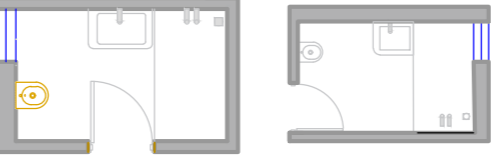
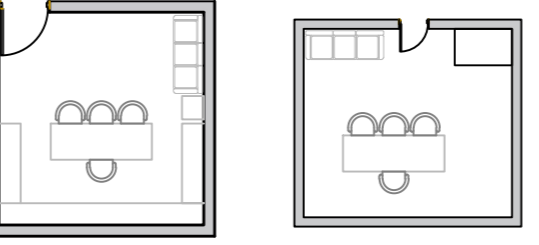
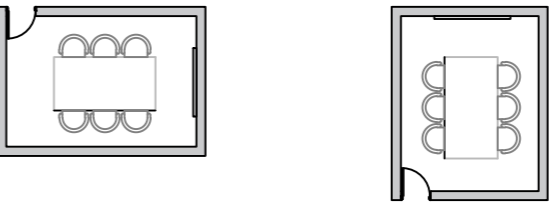
SIDE ELEVATION

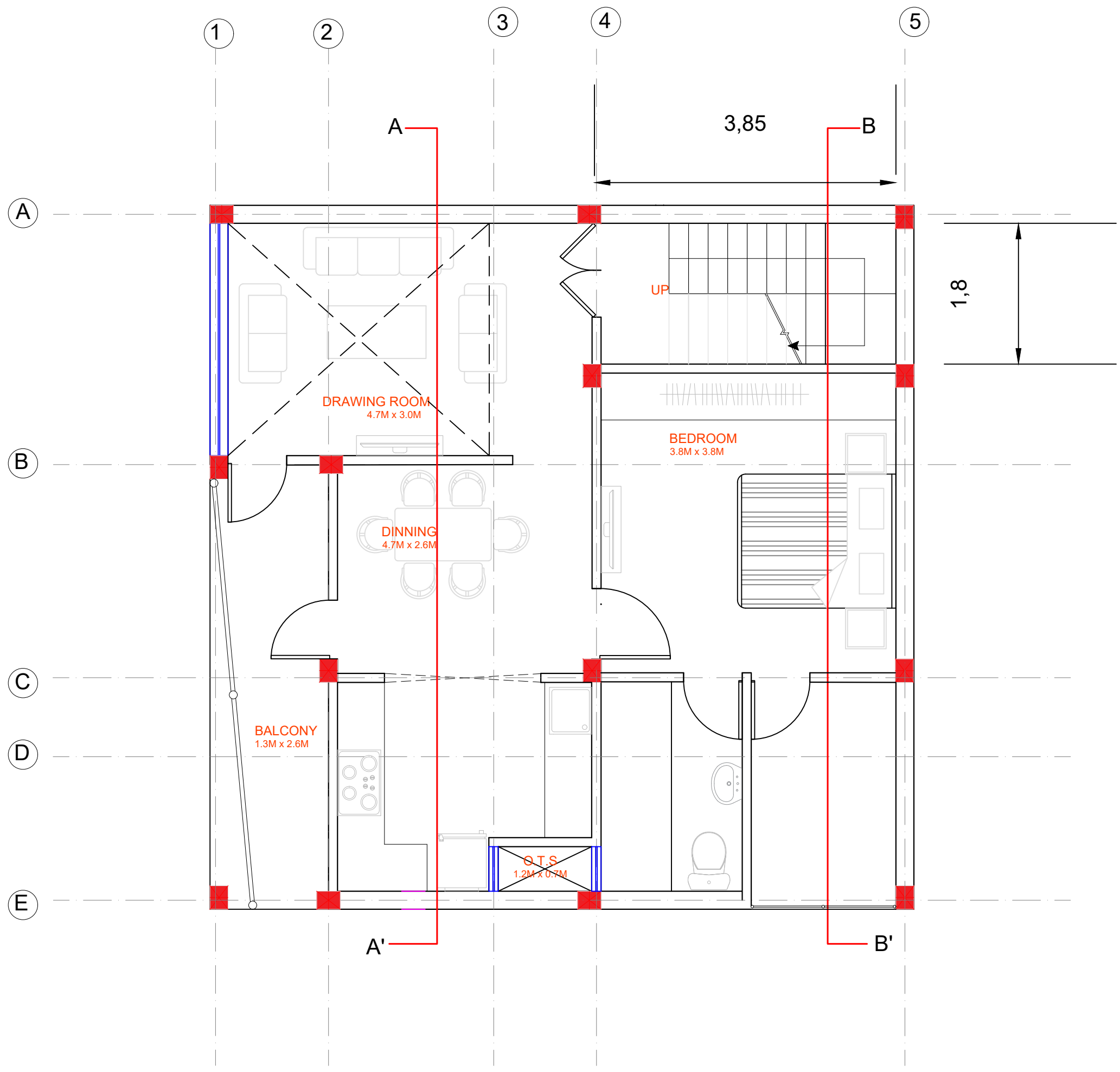


ELEVATION

SAHSI JAIN  
0223AR231008  
III SEM  
H.C.A.T.P

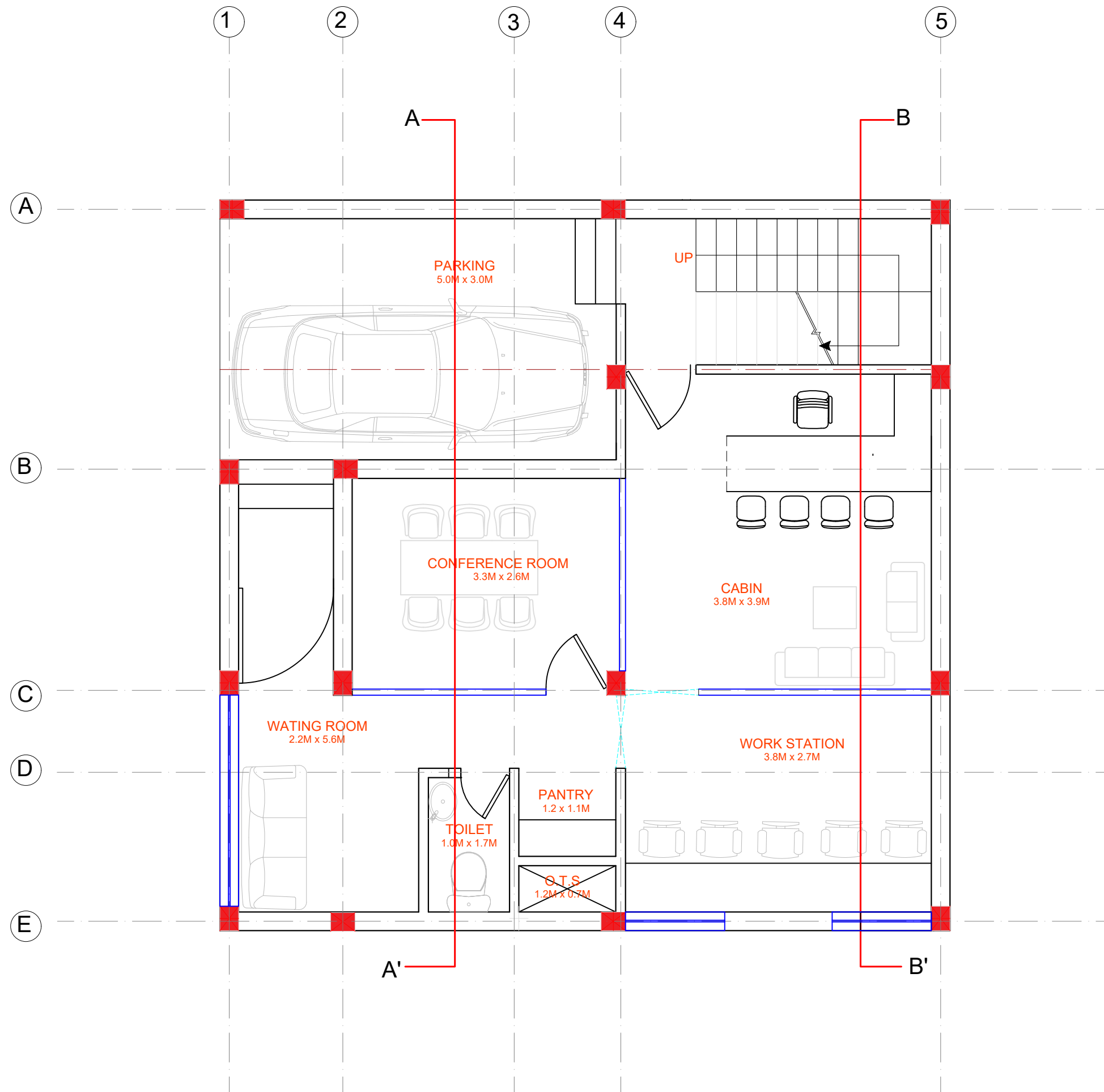


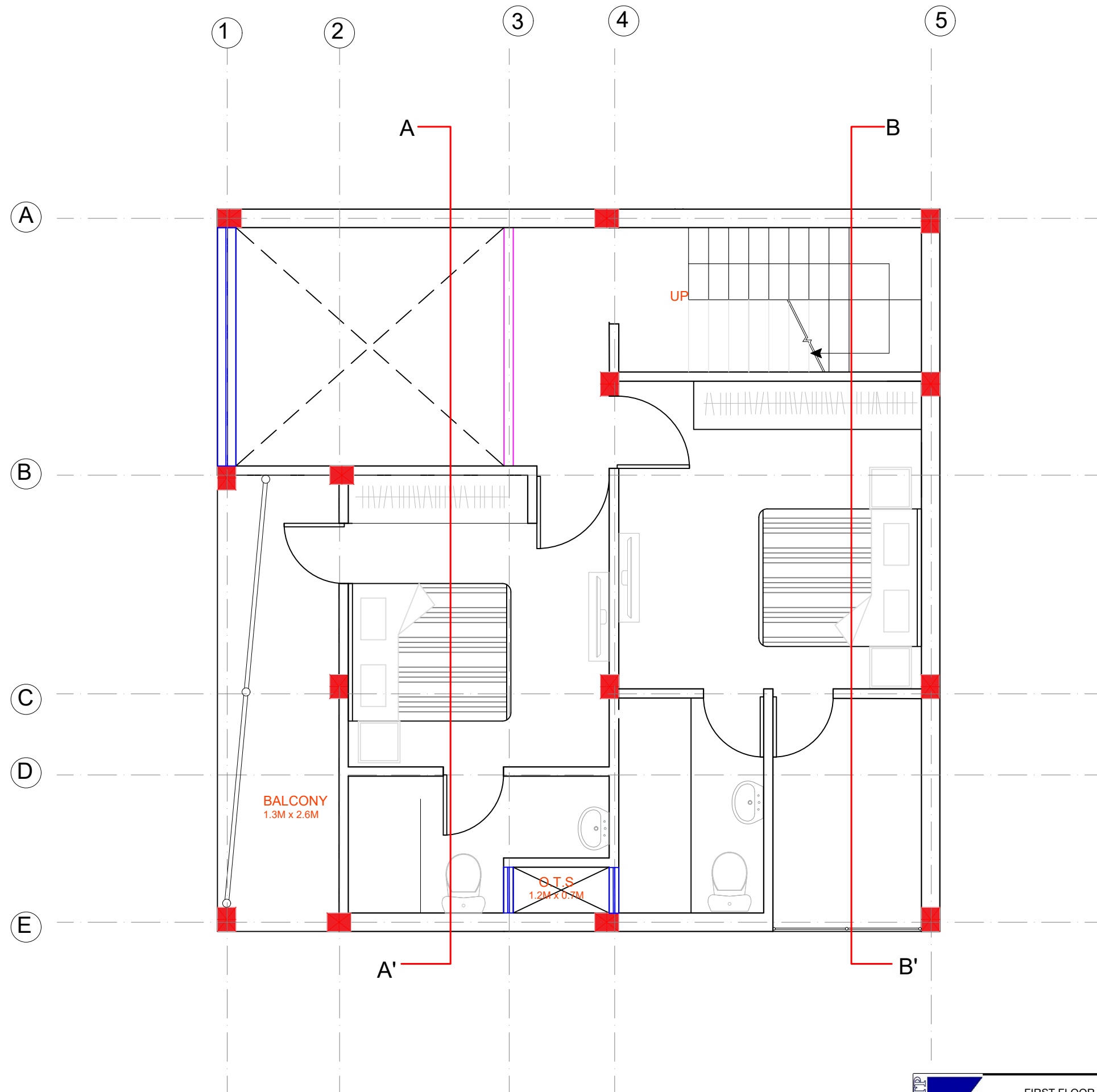
LIST OF SPACES	OCCUPANCY	FURNITURE REQUIRED	AREA / SIZE OF FURNITURE			LAYOUT OPTIONS	TOTAL USABLE AREA	TOTAL AREA
			LENGTH	WIDTH	HEIGHT			
1. HOUSE								
a.) LIVING ROOM	8	SOFA	1.8 M	0.9 M	0.95M		5.72sq m	
		CENTER TABLE	0.9 M	0.5M	0.45 M			
		T.V UNIT	1.5 M	1.2 M	1.2 M			
b.)DRAWING ROOM	5	SOFA	1.8 M	0.9 M	0.95 M		2.33 sq m,	
c.) DIINNING AREA	6	COFFEE TABLE	1.19 M	0.6 M	0.4 M		4.15 sq m	
		DINNING TABLE	1.8 M	0.9 M	0.6 M			
		CHAIR	0.4 M	0.39 M	0.5M			
		CROCKERY UNIT	2 M	0.8M				
d.) POOJA ROOM	2						3.47 sq m	
e.) KITCHEN	3	PLATEFORM	2 M	0.6 M	0.85 M			
		CROCKERY UNIT	2 M	0.8 M	0.4 M			
		SINK	0.45 M	0.4 M				
		REFRIGERATOR	0.7 M	0.7 M	1.68 M			
f.) STORE ROOM	2	CABINET	0.6 M	0.3 M	2 M		5.02 sq m	
g.) BEDROOM	2	BED	1.2 M	1.8 M	0.6 M			
		BED SIDE TABLE	0.45 M	0.45 M	0.5 M			
		STUDY TABLE	1.2 M	0.8 M	0.8 M			
		T.V UNIT	1.2 M	0.9 M	2 M			
		WARDROBE	0.7 M	0.6 M	2.9 M			
h.) TOILET	1	W.C	0.4 M	0.65 M	0.76 M		1.4 sq m	
		WASHBASIN	0.4 M	0.3 M	0.9 M			
		BATHTUB	1.5 M	0.68 M	0.6 M			
i.) ONE CAR PARKING	5	CAR	3.5 M	5 M			17.5 sq m	
2. OFFICE								
a.) CABIN	5	TABLE	1.2 M	0.8 M	0.8 M		3.02 sq m	
		CHAIR	0.4 M	0.39M	0.5 M			
		2 SEATER COUCH		1.6 M	0.4 M			
b.) CONFERENCE ROOM	6	TABLE	1.8 M	0.9 M	0.6 M		2.52 sq m	
		CHAIR	0.4 M	0.39 M	0.5 M			



FIRST FLOOR PLAN

SAHSI JAIN  
0233AR231008  
III SEM  
H.C.A.T.P





FIRST FLOOR PLAN

SAHSI JAIN  
0233AR231008  
III SEM  
H.C.A.T.P

