



CONTENT :-AIIMS REWARI (WORKING DRAWINGS)

1. ACADEMIC BLOCK

2. HOSPITAL BLOCK

3. PG HOSTEL MALE /FEMALE

4. TYPE II HOUSING

5. CM ROOM ,GUWAHATI

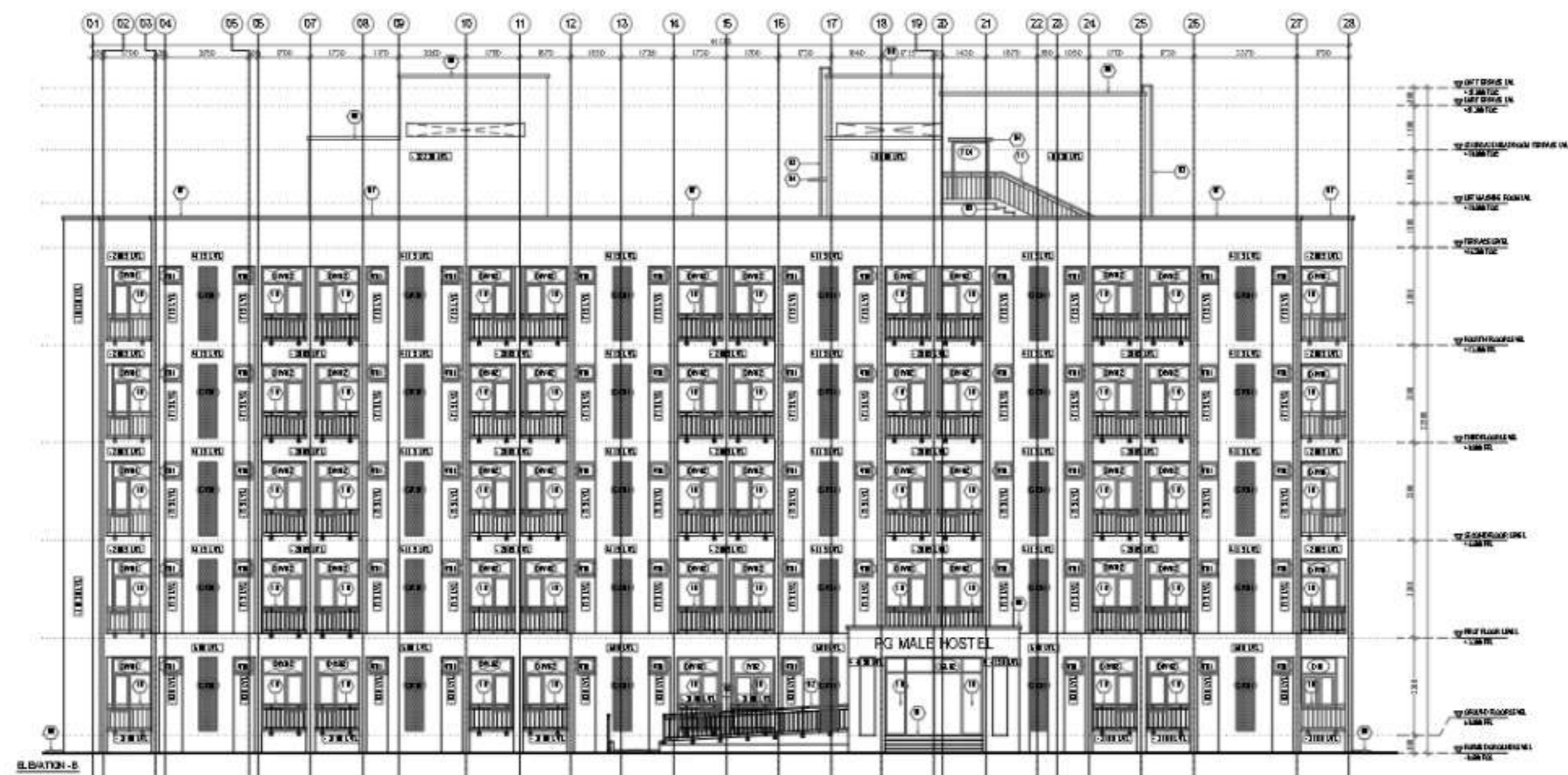
6. CENTRAL DINING MESS

7. SITE VISIT REPORT

8. MISCELLANEOUS RENDES

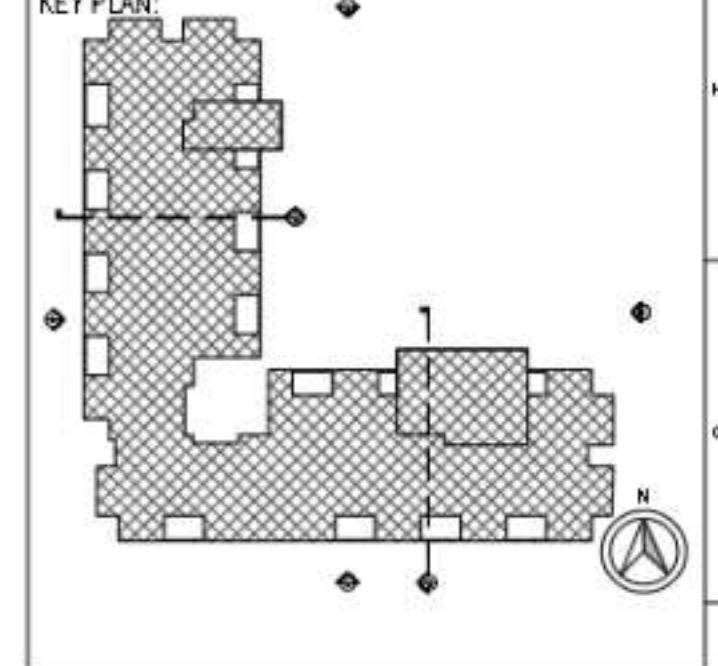


ELEVATION - A



ELEVATION - B

This drawing is the property of L&T Construction LLP and shall not be used or reproduced in any form or by any means without the prior written consent of L&T Construction LLP.



- GENERAL NOTES:**
1. ALL DIMENSIONS ARE IN METERS UNLESS OTHERWISE SPECIFIED.
 2. ALL DIMENSIONS ARE TO FACE UNLESS OTHERWISE SPECIFIED.
 3. THE DRAWING SHOULD BE READ IN CONJUNCTION WITH THE RELEVANT SPECIFICATIONS AND STANDARDS.
 4. ALL DIMENSIONS ARE TO FACE UNLESS OTHERWISE SPECIFIED.
 5. ALL DIMENSIONS ARE TO FACE UNLESS OTHERWISE SPECIFIED.
 6. ALL DIMENSIONS ARE TO FACE UNLESS OTHERWISE SPECIFIED.
 7. ALL DIMENSIONS ARE TO FACE UNLESS OTHERWISE SPECIFIED.
 8. ALL DIMENSIONS ARE TO FACE UNLESS OTHERWISE SPECIFIED.
 9. ALL DIMENSIONS ARE TO FACE UNLESS OTHERWISE SPECIFIED.
 10. ALL DIMENSIONS ARE TO FACE UNLESS OTHERWISE SPECIFIED.
 11. ALL DIMENSIONS ARE TO FACE UNLESS OTHERWISE SPECIFIED.
 12. ALL DIMENSIONS ARE TO FACE UNLESS OTHERWISE SPECIFIED.
 13. ALL DIMENSIONS ARE TO FACE UNLESS OTHERWISE SPECIFIED.
 14. ALL DIMENSIONS ARE TO FACE UNLESS OTHERWISE SPECIFIED.
 15. ALL DIMENSIONS ARE TO FACE UNLESS OTHERWISE SPECIFIED.
 16. ALL DIMENSIONS ARE TO FACE UNLESS OTHERWISE SPECIFIED.
 17. ALL DIMENSIONS ARE TO FACE UNLESS OTHERWISE SPECIFIED.
 18. ALL DIMENSIONS ARE TO FACE UNLESS OTHERWISE SPECIFIED.
 19. ALL DIMENSIONS ARE TO FACE UNLESS OTHERWISE SPECIFIED.
 20. ALL DIMENSIONS ARE TO FACE UNLESS OTHERWISE SPECIFIED.
 21. ALL DIMENSIONS ARE TO FACE UNLESS OTHERWISE SPECIFIED.
 22. ALL DIMENSIONS ARE TO FACE UNLESS OTHERWISE SPECIFIED.

- ELEVATION KEY NOTES:**
1. STAIRS SHOWN IN SURFACE.
 2. STAIRS SHOWN IN SURFACE.
 3. STAIRS SHOWN IN SURFACE.
 4. STAIRS SHOWN IN SURFACE.
 5. STAIRS SHOWN IN SURFACE.
 6. STAIRS SHOWN IN SURFACE.
 7. STAIRS SHOWN IN SURFACE.
 8. STAIRS SHOWN IN SURFACE.
 9. STAIRS SHOWN IN SURFACE.
 10. STAIRS SHOWN IN SURFACE.
 11. STAIRS SHOWN IN SURFACE.
 12. STAIRS SHOWN IN SURFACE.
 13. STAIRS SHOWN IN SURFACE.
 14. STAIRS SHOWN IN SURFACE.
 15. STAIRS SHOWN IN SURFACE.
 16. STAIRS SHOWN IN SURFACE.
 17. STAIRS SHOWN IN SURFACE.
 18. STAIRS SHOWN IN SURFACE.
 19. STAIRS SHOWN IN SURFACE.
 20. STAIRS SHOWN IN SURFACE.
 21. STAIRS SHOWN IN SURFACE.
 22. STAIRS SHOWN IN SURFACE.

NO.	REVISION	DESCRIPTION	DESIGNED	DRAWN	CHECKED	APPROVED

CLIENT
MINISTRY OF HEALTH AND FAMILY WELFARE
 (GOVT. OF INDIA, NEW DELHI)

EXECUTING AGENCY
HITES
 HLL INFRA TECH SOLY CO. LTD.

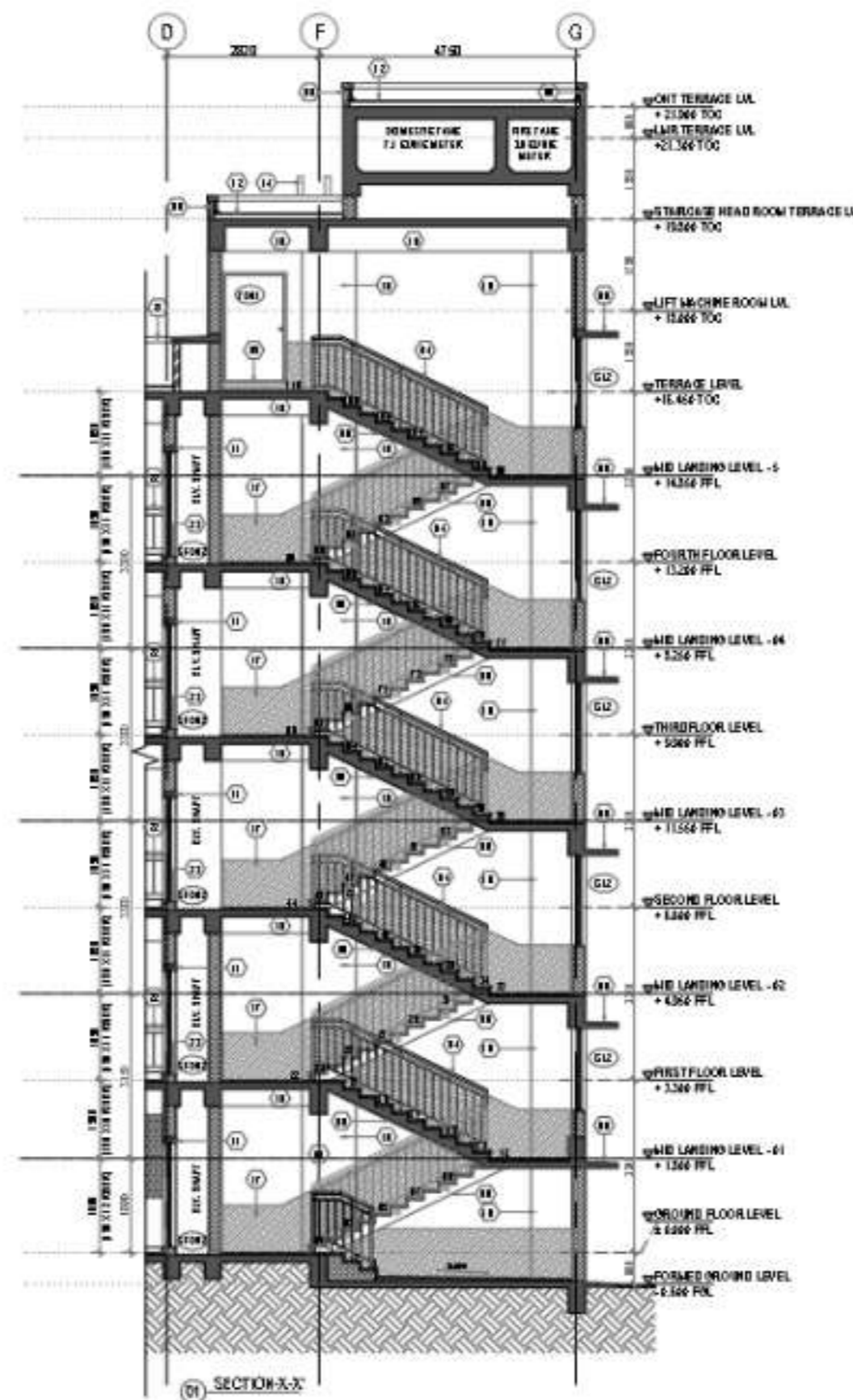
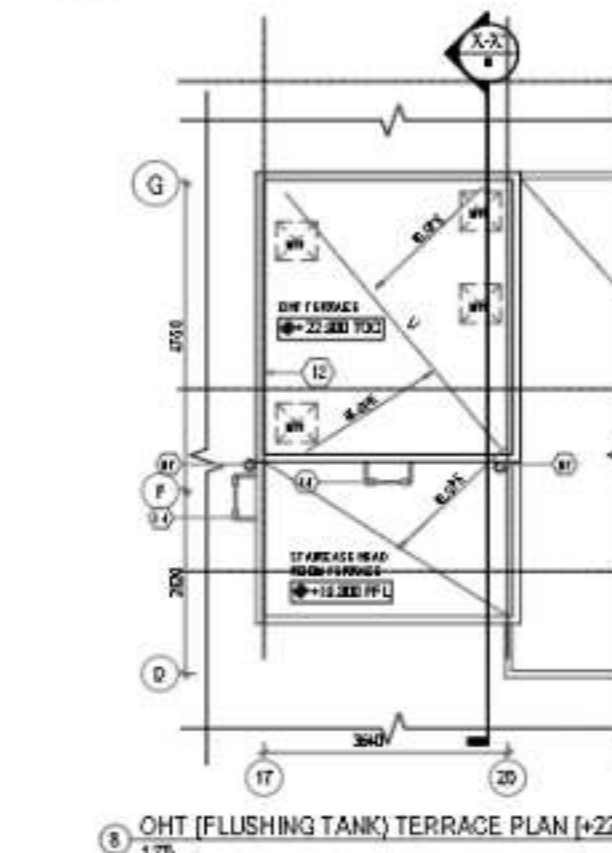
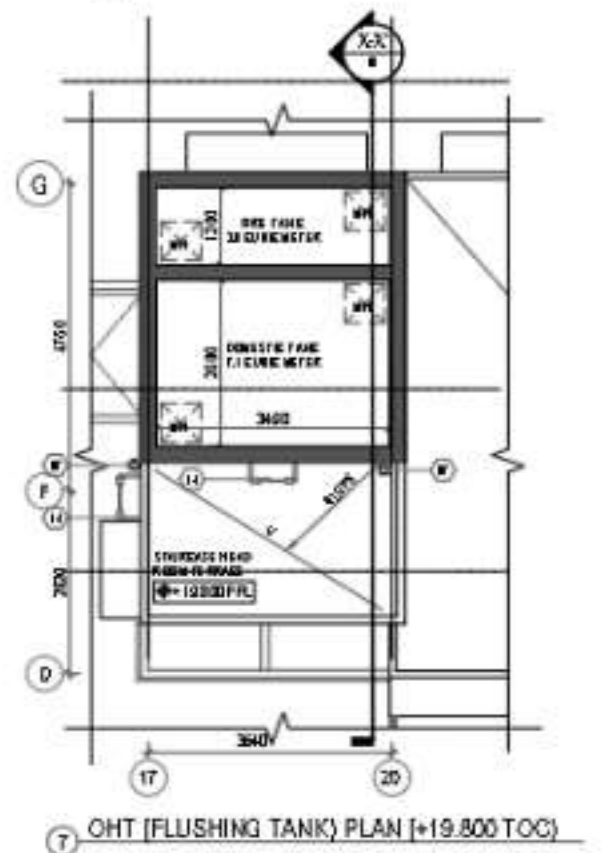
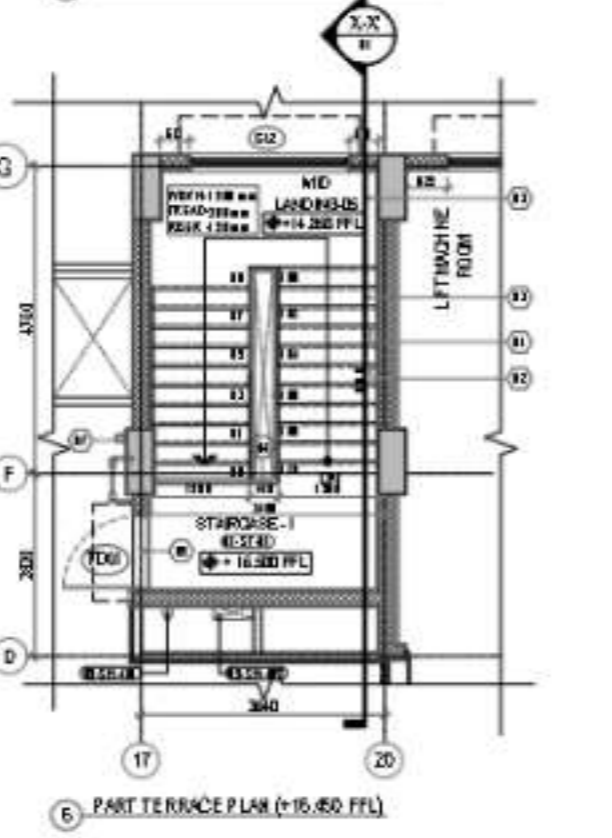
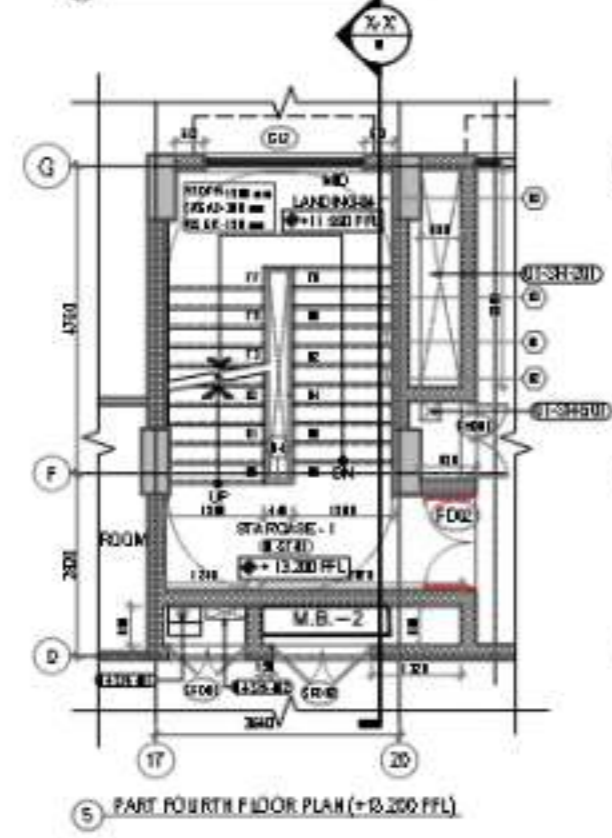
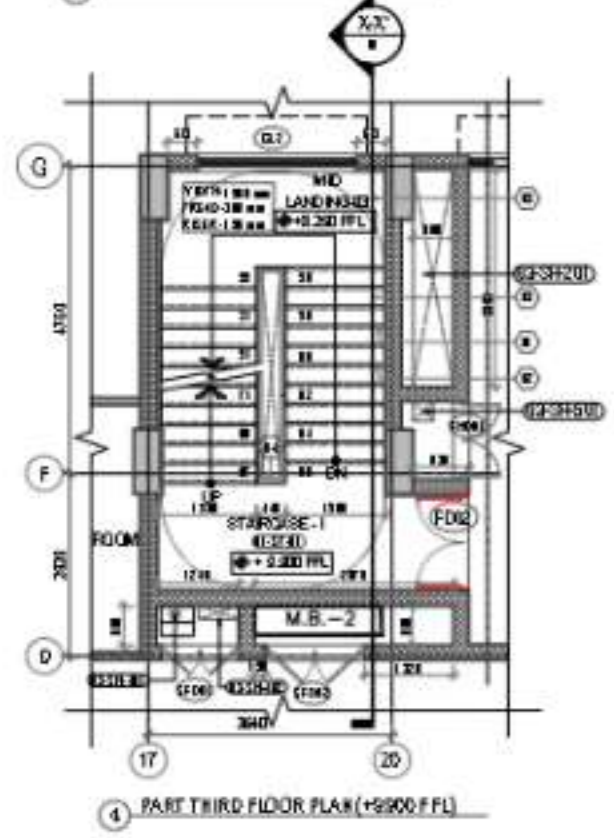
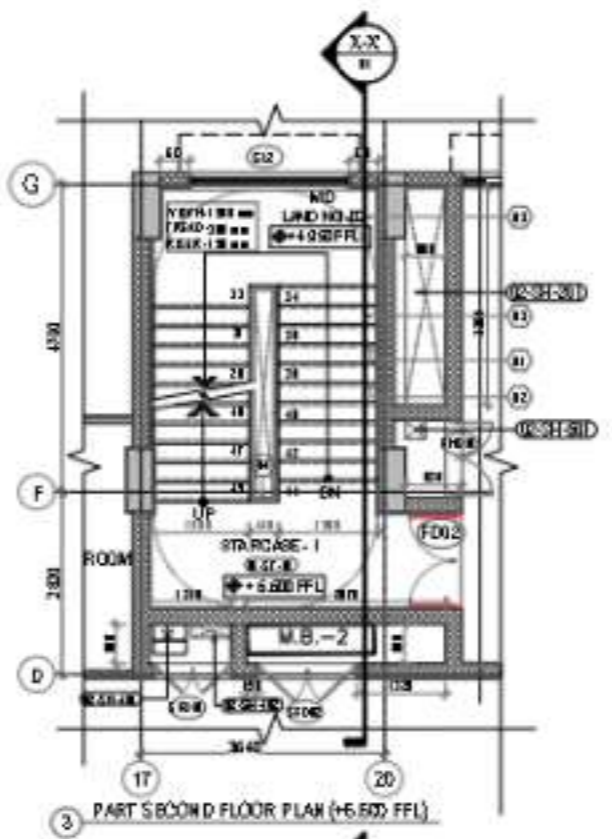
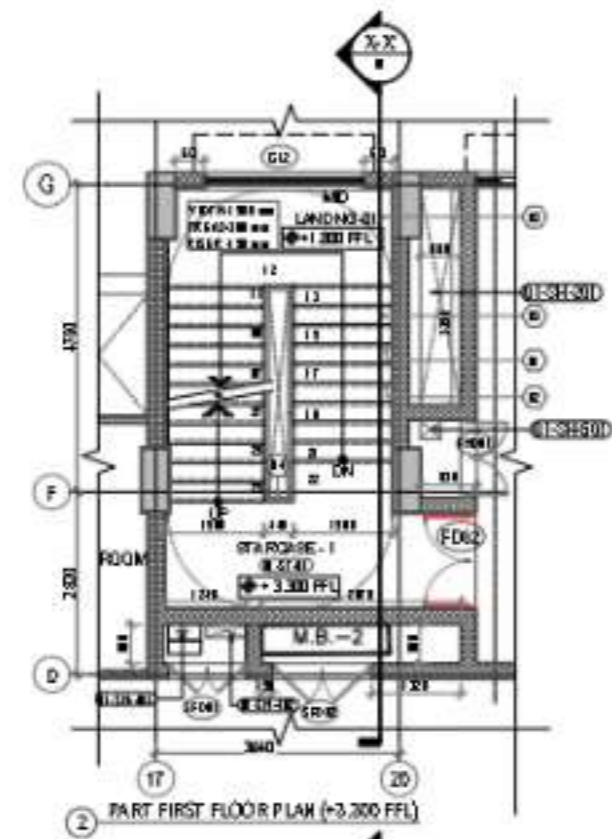
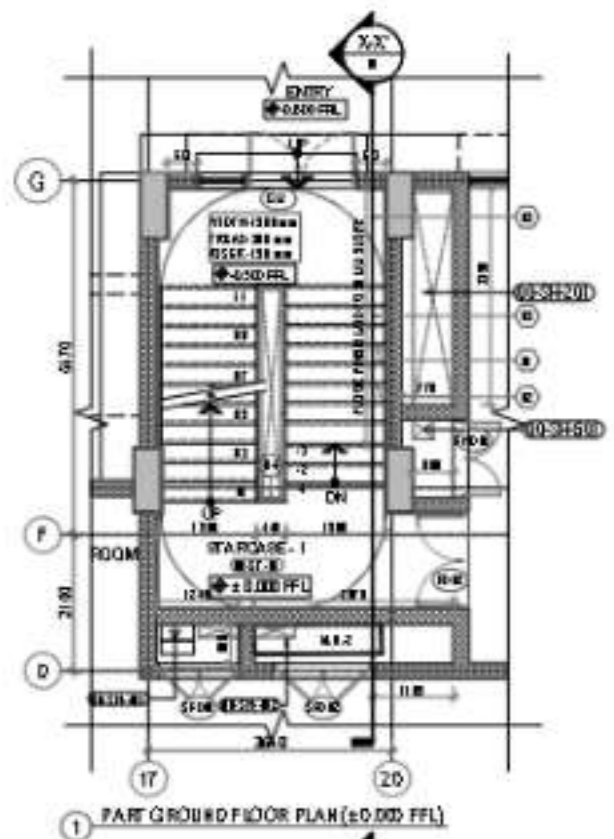
EPC CONTRACTOR
L&T Construction
 Buildings & Factories

PROJECT
 CONSTRUCTION OF ALL INDIA INSTITUTE OF MEDICAL SCIENCES (AIMS) REWARI, HARYANA

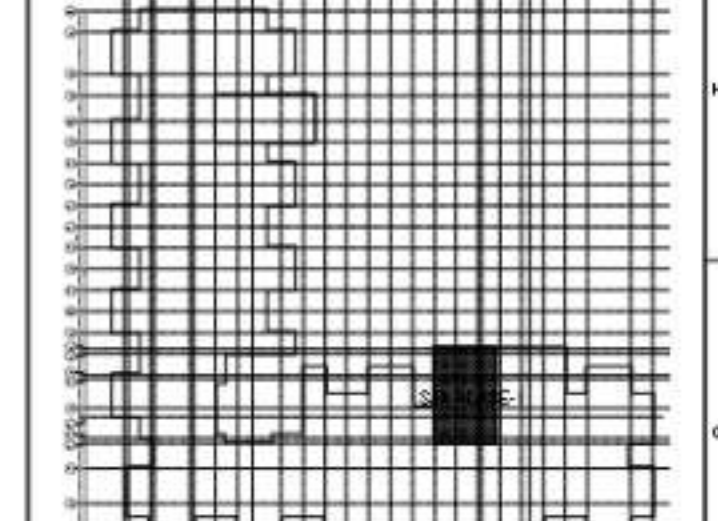
Job No.: 024001
PROJECT NAME: PG HOSTEL - MALE / FEMALE
DRAWING TITLE: ELEVATION - A & B
DRAWING NUMBER: 024001-A-HP-11-WD-005

SCALE: 1:100 **SHEET NO.:** A1 **REVISION:** A

RELEASED FOR: PRELIMINARY TENDER WORKING APPROVED CONFIRMATION



This drawing is the property of L&T Construction Pvt. Ltd. and shall not be used or copied or otherwise made use of without the prior written consent of L&T Construction Pvt. Ltd.



KEY PLAN
SCALE: NTS

- 1. ALL DIMENSIONS ARE IN METERS UNLESS OTHERWISE SPECIFIED.
- 2. THE DRAWING SHOULD BE READ ALONG WITH THE GENERAL ARCHITECTURAL FLOOR PLAN OR ARCHES.
- 3. ALL BEAMS AND COLUMNS SHALL BE SHOWN WITH THE CORRECT DIA. AND SPACING AS PER THE ARCHITECTURAL PLAN.
- 4. REFLECT POSITIONING OF DOORS.
- 5. FOR FINISHES, REFER TO THE ARCHITECTURAL FLOOR PLAN OR ARCHES.
- 6. FOR FINISHES, REFER TO THE ARCHITECTURAL FLOOR PLAN OR ARCHES.

FINISHES:
 FLOORING: POLISHED GRANITE
 WALLS: WHITE WASH
 CEILING: POP
 ROOFING: TERRAZZO
 STAIRS: POLISHED GRANITE
 LIFT MACHINE ROOM: POLISHED GRANITE
 TOILETS: POLISHED GRANITE
 TERRACE: TERRAZZO
 ROOFING: TERRAZZO
 STAIRS: POLISHED GRANITE
 LIFT MACHINE ROOM: POLISHED GRANITE
 TOILETS: POLISHED GRANITE
 TERRACE: TERRAZZO

LEVELS:
 FFL: FINISHED FLOOR LEVEL
 GFL: GRADE FINISHED LEVEL
 FSL: FINISHED SLAB LEVEL
 TFL: TERRACE FINISHED LEVEL
 TOC: TOP OF CONCRETE
 TFC: TOP FINISHED CONCRETE

DOOR IN ALL OPENING SCHEDULES

FLOOR	DOOR NO.	HEIGHT	WIDTH	TYPE	LEVEL
GROUND FLOOR	D-01	2.10	0.90	SWING	+0.000 FFL
GROUND FLOOR	D-02	2.10	0.90	SWING	+0.000 FFL
GROUND FLOOR	D-03	2.10	0.90	SWING	+0.000 FFL
GROUND FLOOR	D-04	2.10	0.90	SWING	+0.000 FFL
GROUND FLOOR	D-05	2.10	0.90	SWING	+0.000 FFL
GROUND FLOOR	D-06	2.10	0.90	SWING	+0.000 FFL
GROUND FLOOR	D-07	2.10	0.90	SWING	+0.000 FFL
GROUND FLOOR	D-08	2.10	0.90	SWING	+0.000 FFL
GROUND FLOOR	D-09	2.10	0.90	SWING	+0.000 FFL
GROUND FLOOR	D-10	2.10	0.90	SWING	+0.000 FFL
GROUND FLOOR	D-11	2.10	0.90	SWING	+0.000 FFL
GROUND FLOOR	D-12	2.10	0.90	SWING	+0.000 FFL
GROUND FLOOR	D-13	2.10	0.90	SWING	+0.000 FFL
GROUND FLOOR	D-14	2.10	0.90	SWING	+0.000 FFL
GROUND FLOOR	D-15	2.10	0.90	SWING	+0.000 FFL
GROUND FLOOR	D-16	2.10	0.90	SWING	+0.000 FFL
GROUND FLOOR	D-17	2.10	0.90	SWING	+0.000 FFL
GROUND FLOOR	D-18	2.10	0.90	SWING	+0.000 FFL
GROUND FLOOR	D-19	2.10	0.90	SWING	+0.000 FFL
GROUND FLOOR	D-20	2.10	0.90	SWING	+0.000 FFL
GROUND FLOOR	D-21	2.10	0.90	SWING	+0.000 FFL
GROUND FLOOR	D-22	2.10	0.90	SWING	+0.000 FFL
GROUND FLOOR	D-23	2.10	0.90	SWING	+0.000 FFL
GROUND FLOOR	D-24	2.10	0.90	SWING	+0.000 FFL
GROUND FLOOR	D-25	2.10	0.90	SWING	+0.000 FFL
GROUND FLOOR	D-26	2.10	0.90	SWING	+0.000 FFL
GROUND FLOOR	D-27	2.10	0.90	SWING	+0.000 FFL
GROUND FLOOR	D-28	2.10	0.90	SWING	+0.000 FFL
GROUND FLOOR	D-29	2.10	0.90	SWING	+0.000 FFL
GROUND FLOOR	D-30	2.10	0.90	SWING	+0.000 FFL
GROUND FLOOR	D-31	2.10	0.90	SWING	+0.000 FFL
GROUND FLOOR	D-32	2.10	0.90	SWING	+0.000 FFL
GROUND FLOOR	D-33	2.10	0.90	SWING	+0.000 FFL
GROUND FLOOR	D-34	2.10	0.90	SWING	+0.000 FFL
GROUND FLOOR	D-35	2.10	0.90	SWING	+0.000 FFL
GROUND FLOOR	D-36	2.10	0.90	SWING	+0.000 FFL
GROUND FLOOR	D-37	2.10	0.90	SWING	+0.000 FFL
GROUND FLOOR	D-38	2.10	0.90	SWING	+0.000 FFL
GROUND FLOOR	D-39	2.10	0.90	SWING	+0.000 FFL
GROUND FLOOR	D-40	2.10	0.90	SWING	+0.000 FFL
GROUND FLOOR	D-41	2.10	0.90	SWING	+0.000 FFL
GROUND FLOOR	D-42	2.10	0.90	SWING	+0.000 FFL
GROUND FLOOR	D-43	2.10	0.90	SWING	+0.000 FFL
GROUND FLOOR	D-44	2.10	0.90	SWING	+0.000 FFL
GROUND FLOOR	D-45	2.10	0.90	SWING	+0.000 FFL
GROUND FLOOR	D-46	2.10	0.90	SWING	+0.000 FFL
GROUND FLOOR	D-47	2.10	0.90	SWING	+0.000 FFL
GROUND FLOOR	D-48	2.10	0.90	SWING	+0.000 FFL
GROUND FLOOR	D-49	2.10	0.90	SWING	+0.000 FFL
GROUND FLOOR	D-50	2.10	0.90	SWING	+0.000 FFL
GROUND FLOOR	D-51	2.10	0.90	SWING	+0.000 FFL
GROUND FLOOR	D-52	2.10	0.90	SWING	+0.000 FFL
GROUND FLOOR	D-53	2.10	0.90	SWING	+0.000 FFL
GROUND FLOOR	D-54	2.10	0.90	SWING	+0.000 FFL
GROUND FLOOR	D-55	2.10	0.90	SWING	+0.000 FFL
GROUND FLOOR	D-56	2.10	0.90	SWING	+0.000 FFL
GROUND FLOOR	D-57	2.10	0.90	SWING	+0.000 FFL
GROUND FLOOR	D-58	2.10	0.90	SWING	+0.000 FFL
GROUND FLOOR	D-59	2.10	0.90	SWING	+0.000 FFL
GROUND FLOOR	D-60	2.10	0.90	SWING	+0.000 FFL
GROUND FLOOR	D-61	2.10	0.90	SWING	+0.000 FFL
GROUND FLOOR	D-62	2.10	0.90	SWING	+0.000 FFL
GROUND FLOOR	D-63	2.10	0.90	SWING	+0.000 FFL
GROUND FLOOR	D-64	2.10	0.90	SWING	+0.000 FFL
GROUND FLOOR	D-65	2.10	0.90	SWING	+0.000 FFL
GROUND FLOOR	D-66	2.10	0.90	SWING	+0.000 FFL
GROUND FLOOR	D-67	2.10	0.90	SWING	+0.000 FFL
GROUND FLOOR	D-68	2.10	0.90	SWING	+0.000 FFL
GROUND FLOOR	D-69	2.10	0.90	SWING	+0.000 FFL
GROUND FLOOR	D-70	2.10	0.90	SWING	+0.000 FFL
GROUND FLOOR	D-71	2.10	0.90	SWING	+0.000 FFL
GROUND FLOOR	D-72	2.10	0.90	SWING	+0.000 FFL
GROUND FLOOR	D-73	2.10	0.90	SWING	+0.000 FFL
GROUND FLOOR	D-74	2.10	0.90	SWING	+0.000 FFL
GROUND FLOOR	D-75	2.10	0.90	SWING	+0.000 FFL
GROUND FLOOR	D-76	2.10	0.90	SWING	+0.000 FFL
GROUND FLOOR	D-77	2.10	0.90	SWING	+0.000 FFL
GROUND FLOOR	D-78	2.10	0.90	SWING	+0.000 FFL
GROUND FLOOR	D-79	2.10	0.90	SWING	+0.000 FFL
GROUND FLOOR	D-80	2.10	0.90	SWING	+0.000 FFL
GROUND FLOOR	D-81	2.10	0.90	SWING	+0.000 FFL
GROUND FLOOR	D-82	2.10	0.90	SWING	+0.000 FFL
GROUND FLOOR	D-83	2.10	0.90	SWING	+0.000 FFL
GROUND FLOOR	D-84	2.10	0.90	SWING	+0.000 FFL
GROUND FLOOR	D-85	2.10	0.90	SWING	+0.000 FFL
GROUND FLOOR	D-86	2.10	0.90	SWING	+0.000 FFL
GROUND FLOOR	D-87	2.10	0.90	SWING	+0.000 FFL
GROUND FLOOR	D-88	2.10	0.90	SWING	+0.000 FFL
GROUND FLOOR	D-89	2.10	0.90	SWING	+0.000 FFL
GROUND FLOOR	D-90	2.10	0.90	SWING	+0.000 FFL
GROUND FLOOR	D-91	2.10	0.90	SWING	+0.000 FFL
GROUND FLOOR	D-92	2.10	0.90	SWING	+0.000 FFL
GROUND FLOOR	D-93	2.10	0.90	SWING	+0.000 FFL
GROUND FLOOR	D-94	2.10	0.90	SWING	+0.000 FFL
GROUND FLOOR	D-95	2.10	0.90	SWING	+0.000 FFL
GROUND FLOOR	D-96	2.10	0.90	SWING	+0.000 FFL
GROUND FLOOR	D-97	2.10	0.90	SWING	+0.000 FFL
GROUND FLOOR	D-98	2.10	0.90	SWING	+0.000 FFL
GROUND FLOOR	D-99	2.10	0.90	SWING	+0.000 FFL
GROUND FLOOR	D-100	2.10	0.90	SWING	+0.000 FFL

FLOOR	FLOOR LEVEL
GROUND FLOOR LEVEL	+0.000 FFL
MD - LANDING LVL - 1	+3.200 FFL
FIRST FLOOR LEVEL	+6.500 FFL
MD - LANDING LVL - 2	+9.800 FFL
SECOND FLOOR LEVEL	+13.200 FFL
MD - LANDING LVL - 3	+16.400 FFL
THIRD FLOOR LEVEL	+19.800 FFL
MD - LANDING LVL - 4	+22.900 FFL
FOURTH FLOOR LEVEL	+26.300 FFL
MD - LANDING LVL - 5	+29.500 FFL
MD - LANDING LVL - 6	+32.700 FFL
MD - LANDING LVL - 7	+35.900 FFL
MD - LANDING LVL - 8	+39.100 FFL
MD - LANDING LVL - 9	+42.300 FFL
MD - LANDING LVL - 10	+45.500 FFL
MD - LANDING LVL - 11	+48.700 FFL
MD - LANDING LVL - 12	+51.900 FFL
MD - LANDING LVL - 13	+55.100 FFL
MD - LANDING LVL - 14	+58.300 FFL
MD - LANDING LVL - 15	+61.500 FFL
MD - LANDING LVL - 16	+64.700 FFL
MD - LANDING LVL - 17	+67.900 FFL
MD - LANDING LVL - 18	+71.100 FFL
MD - LANDING LVL - 19	+74.300 FFL
MD - LANDING LVL - 20	+77.500 FFL
MD - LANDING LVL - 21	+80.700 FFL
MD - LANDING LVL - 22	+83.900 FFL
MD - LANDING LVL - 23	+87.100 FFL
MD - LANDING LVL - 24	+90.300 FFL
MD - LANDING LVL - 25	+93.500 FFL
MD - LANDING LVL - 26	+96.700 FFL
MD - LANDING LVL - 27	+99.900 FFL
MD - LANDING LVL - 28	+103.100 FFL
MD - LANDING LVL - 29	+106.300 FFL
MD - LANDING LVL - 30	+109.500 FFL
MD - LANDING LVL - 31	+112.700 FFL
MD - LANDING LVL - 32	+115.900 FFL
MD - LANDING LVL - 33	+119.100 FFL
MD - LANDING LVL - 34	+122.300 FFL
MD - LANDING LVL - 35	+125.500 FFL
MD - LANDING LVL - 36	+128.700 FFL
MD - LANDING LVL - 37	+131.900 FFL
MD - LANDING LVL - 38	+135.100 FFL
MD - LANDING LVL - 39	+138.300 FFL
MD - LANDING LVL - 40	+141.500 FFL
MD - LANDING LVL - 41	+144.700 FFL
MD - LANDING LVL - 42	+147.900 FFL
MD - LANDING LVL - 43	+151.100 FFL
MD - LANDING LVL - 44	+154.300 FFL
MD - LANDING LVL - 45	+157.500 FFL
MD - LANDING LVL - 46	+160.700 FFL
MD - LANDING LVL - 47	+163.900 FFL
MD - LANDING LVL - 48	+167.100 FFL
MD - LANDING LVL - 49	+170.300 FFL
MD - LANDING LVL - 50	+173.500 FFL
MD - LANDING LVL - 51	+176.700 FFL
MD - LANDING LVL - 52	+179.900 FFL
MD - LANDING LVL - 53	+183.100 FFL
MD - LANDING LVL - 54	+186.300 FFL
MD - LANDING LVL - 55	+189.500 FFL
MD - LANDING LVL - 56	+192.700 FFL
MD - LANDING LVL - 57	+195.900 FFL
MD - LANDING LVL - 58	+199.100 FFL
MD - LANDING LVL - 59	+202.300 FFL
MD - LANDING LVL - 60	+205.500 FFL
MD - LANDING LVL - 61	+208.700 FFL
MD - LANDING LVL - 62	+211.900 FFL
MD - LANDING LVL - 63	+215.100 FFL
MD - LANDING LVL - 64	+218.300 FFL
MD - LANDING LVL - 65	+221.500 FFL
MD - LANDING LVL - 66	+224.700 FFL
MD - LANDING LVL - 67	+227.900 FFL
MD - LANDING LVL - 68	+231.100 FFL
MD - LANDING LVL - 69	+234.300 FFL
MD - LANDING LVL - 70	+237.500 FFL
MD - LANDING LVL - 71	+240.700 FFL
MD - LANDING LVL - 72	+243.900 FFL
MD - LANDING LVL - 73	+247.100 FFL
MD - LANDING LVL - 74	+250.300 FFL
MD - LANDING LVL - 75	+253.500 FFL
MD - LANDING LVL - 76	+256.700 FFL
MD - LANDING LVL - 77	+259.900 FFL
MD - LANDING LVL - 78	+263.100 FFL
MD - LANDING LVL - 79	+266.300 FFL
MD - LANDING LVL - 80	+269.500 FFL
MD - LANDING LVL - 81	+272.700 FFL
MD - LANDING LVL - 82	+275.900 FFL
MD - LANDING LVL - 83	+279.100 FFL
MD - LANDING LVL - 84	+282.300 FFL
MD - LANDING LVL - 85	+285.500 FFL
MD - LANDING LVL - 86	+288.700 FFL
MD - LANDING LVL - 87	+291.900 FFL
MD - LANDING LVL - 88	+295.100 FFL
MD - LANDING LVL - 89	+298.300 FFL
MD - LANDING LVL - 90	+301.500 FFL
MD - LANDING LVL - 91	+304.700 FFL
MD - LANDING LVL - 92	+307.900 FFL
MD - LANDING LVL - 93	+311.100 FFL
MD - LANDING LVL - 94	+314.300 FFL
MD - LANDING LVL - 95	+317.500 FFL
MD - LANDING LVL - 96	+320.700 FFL
MD - LANDING LVL - 97	+323.900 FFL
MD - LANDING LVL - 98	+327.100 FFL
MD - LANDING LVL - 99	+330.300 FFL
MD - LANDING LVL - 100	+333.500 FFL

REVISION	DESCRIPTION	DATE	DESIGNED	DRAWN	CHECKED	APPROVED
01	ISSUED FOR CONSTRUCTION					

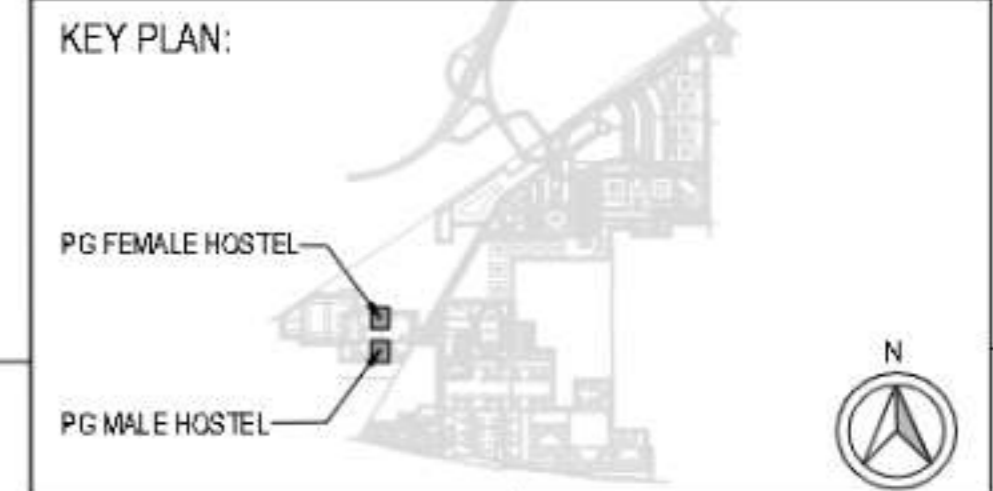
CLIENT
MINISTRY OF HEALTH AND FAMILY WELFARE
 (GOVT. OF INDIA, NEW DELHI)

EXECUTING AGENCY
HITES
 HLL INFRA TECH SOLVS PVT. LTD.

EPC CONTRACTOR
L&T Construction
 Buildings & Factories

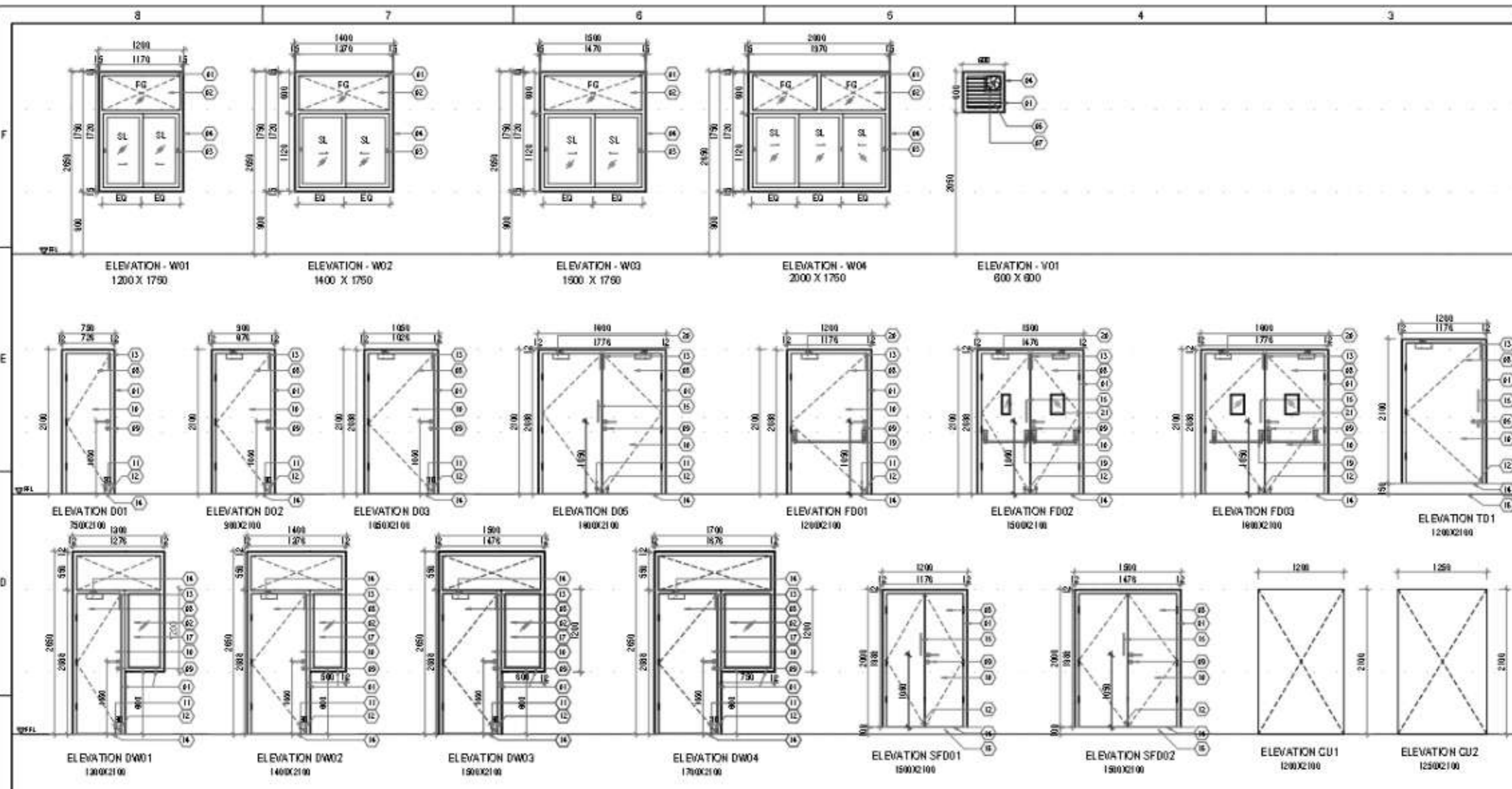
PROJECT

This drawing is the property of L&T Construction & F&E and must not be passed on to any person or body not authorized by us to receive it nor be copied or otherwise made use either in full or in part by such person or body without our prior permission in writing.



- KEY NOTES**
01. ALUMINIUM FRAME
 02. SINGLE GLAZED UNIT
 03. FLUSH HANDLE
 04. WALL PLASTERING
 05. ALDROP
 06. 4MM THK GLAZED LOUVERS
 07. EXHAUST FAN ASH HVAC
 08. FLUSH DOOR
 09. MORTICE LOCK WITH LEVER HANDLE
 10. LAMINATE FINISH
 11. DOOR STOPPER
 12. PVC DOOR BUFFER
 13. TOWER BOLT
 14. 6 MM AIR GAP
 15. D-TYPE SS HANDLE
 16. RAISED DOOR SILL 150MM
 17. FIXED SHUTTER
 18. SLIDING SHUTTER

- LEGEND**
- FGL - FINISHED GROUND LEVEL
 - FFL - FINISHED FLOOR LEVEL
 - LVL - LEVEL
 - PHE - PUBLIC HEALTH ENGINEERING
 - HVAC - HEATING VENTILATION & AIR-CONDITIONING
 - ELEC - ELECTRICAL
 - EIV - EXTRA LOW VOLTAGE
 - FEA - FIRE EQUIPMENT AREA
 - RWD/P - RAIN WATER DOWNTAKE PIPE
 - TOC - TOP OF CONCRETE
 - CU - WALL OPENING
 - FG - FIXED GLASS



C HARDWARE SCHEDULE

TYPE OF DOORS	ALUMINIUM FRAMED FLUSH DOOR				FIRE DOOR			ALUMINIUM FRAMED FLUSH DOOR																						
	D01		D02		D03		D05		FD01		FD02		FD03		DW01		DW02		DW03		DW04		SFD01		SFD02		TD01			
NO. OF SHUTTERS	SINGLE SHUTTER	SINGLE SHUTTER	SINGLE SHUTTER	DOUBLE SHUTTER	SINGLE SHUTTER	DOUBLE SHUTTER	DOUBLE SHUTTER	DOUBLE SHUTTER	DOOR W WINDOW	DOOR W WINDOW	DOOR W WINDOW	DOOR W WINDOW	DOOR W WINDOW	DOOR W WINDOW	DOOR W WINDOW	DOOR W WINDOW	DOOR W WINDOW	DOOR W WINDOW	DOOR W WINDOW	DOOR W WINDOW	DOOR W WINDOW	DOOR W WINDOW	DOUBLE SHUTTER	DOUBLE SHUTTER	SINGLE SHUTTER					
TOTAL NUMBERS	181	17	167	2	6	16	5	17	118	8	4	5	10	3	9	3	24	3	12	8	30	6	80	3	9					
1. HINGES	3	543	3	51	3	501	6	8	3	18	6	98	6	30	3	51	3	354	3	24	3	12	6	30	6	80	3	9		
2. MORTICE LOCK	1	181	1	17	1	167	1	2	1	6	1	16	1	5	1	17	1	118	1	8	1	4	1	5	1	10	1	3		
3. LEVER HANDLE (set of 2)	2	362	2	34	2	334	2	4	2	12	2	32	2	10	2	34	2	236	2	16	2	8	1	5	1	10	1	3		
4. SS D HANDLE (set of 2)							2	4			2	32	2	10								1	5	1	10	2	6			
5. ALDROP																											2	6		
6. DOOR STOPPER	1	181	1	17	1	167	2	4	1	6	2	32	2	10	1	17	1	118	1	8	1	4								
7. PVC DOOR BUFFER	1	181	1	17	1	167	2	4	1	6	2	32	2	10	1	17	1	118	1	8	1	4								
8. TOWER BOLT	1	181	1	17	1	167	2	4	1	6	2	32	2	10	1	17	1	118	1	8	1	4								
9. DOOR CLOSER																														
10. PANIC BAR																														

SCHEDULE OF JOINERY - DOORS

NO.	QTY	UNIT	DESCRIPTION	REMARKS	DATE	BY	CHKD BY	DATE
001	181	NO	ALU FRAMED DOOR WITH THE DOUBLE GLAZED UNIT	FOR EXTERIOR USE	11/20
002	17	NO	ALU FRAMED DOOR WITH THE SINGLE GLAZED UNIT	FOR EXTERIOR USE	11/20
003	167	NO	ALU FRAMED DOOR WITH THE DOUBLE GLAZED UNIT	FOR EXTERIOR USE	11/20
004	2	NO	ALU FRAMED DOOR WITH THE DOUBLE GLAZED UNIT	FOR EXTERIOR USE	11/20
005	6	NO	ALU FRAMED DOOR WITH THE DOUBLE GLAZED UNIT	FOR EXTERIOR USE	11/20
006	5	NO	ALU FRAMED DOOR WITH THE DOUBLE GLAZED UNIT	FOR EXTERIOR USE	11/20
007	17	NO	ALU FRAMED DOOR WITH THE DOUBLE GLAZED UNIT	FOR EXTERIOR USE	11/20
008	118	NO	ALU FRAMED DOOR WITH THE DOUBLE GLAZED UNIT	FOR EXTERIOR USE	11/20
009	8	NO	ALU FRAMED DOOR WITH THE DOUBLE GLAZED UNIT	FOR EXTERIOR USE	11/20
010	4	NO	ALU FRAMED DOOR WITH THE DOUBLE GLAZED UNIT	FOR EXTERIOR USE	11/20
011	5	NO	ALU FRAMED DOOR WITH THE DOUBLE GLAZED UNIT	FOR EXTERIOR USE	11/20
012	10	NO	ALU FRAMED DOOR WITH THE DOUBLE GLAZED UNIT	FOR EXTERIOR USE	11/20
013	3	NO	ALU FRAMED DOOR WITH THE DOUBLE GLAZED UNIT	FOR EXTERIOR USE	11/20
014	6	NO	ALU FRAMED DOOR WITH THE DOUBLE GLAZED UNIT	FOR EXTERIOR USE	11/20
015	80	NO	ALU FRAMED DOOR WITH THE DOUBLE GLAZED UNIT	FOR EXTERIOR USE	11/20
016	3	NO	ALU FRAMED DOOR WITH THE DOUBLE GLAZED UNIT	FOR EXTERIOR USE	11/20
017	9	NO	ALU FRAMED DOOR WITH THE DOUBLE GLAZED UNIT	FOR EXTERIOR USE	11/20

REV NO.	DESCRIPTION	DESIGNED	DRAWN	CHECKED	APPROVED

REVISIONS

CHECKED BY	SIGN	DATE	CHECKED BY	SIGN	DATE	CHECKED BY	SIGN	DATE

CLIENT
MINISTRY OF HEALTH AND FAMILY WELFARE
 (GOVT. OF INDIA, NEW DELHI)

EXECUTING AGENCY
HITES
 HLL INFRA TECH SERVICES LIMITED

EPC CONTRACTORS
L&T Construction
 Buildings & Factories

PROJECT
 CONSTRUCTION OF ALL INDIA INSTITUTE OF MEDICAL SCIENCES (AIMS)
 REWARI, HARYANA

Job No: O24001 **BUILDING NAME:**
 PG MALE / FEMALE - HOSTEL

DRAWING TITLE:
 JOINERY SCHEDULE & HARDWARE SCHEDULE

DRAWING NUMBER:
 O24001-A-HP-11-WD-0012

SCALE: 1/50 SHEET NO: A2 REVISION NO: B

RELEASED FOR: PRELIMINARY TENDER INFORMATION APPROVAL CONSTRUCTION



DINING ROOM



MASTER BED ROOM

This drawing is the property of L&T Construction LLP-ECPC and must not be passed on to any person or body of individuals by any recipient nor be copied or otherwise made use of in part or full by any person or body of that or prior permission in writing.

NO.	DESCRIPTION	DESIGNED	DRAWN	CHECKED	APPROVED

CLIENT
MINISTRY OF HEALTH AND FAMILY WELFARE
 (GOVT. OF INDIA, NEW DELHI)

EXECUTIVE AGENCY
 **HITES**
 HLL INFRA TECH SERVICES LIMITED

EPC CONTRACTOR
 **L&T Construction**
 Buildings & Factories

PROJECT
 CONSTRUCTION OF ALL INDIA INSTITUTE OF MEDICAL SCIENCES (AIMS)
 REWARI, HARYANA

NO: 024001
 BUILDING NAME: VVIP GUEST HOUSE 2
 DRAWING TITLE: 3D VIEWS
 DRAWING NUMBER:

SCALE: SHEET NO: A1 REVISION: A
 RELEASED FOR: PRELIMINARY FINAL INFORMATION APPROVAL CONSTRUCTION

THIS DRAWING IS THE PROPERTY OF DESIGN ASSOCIATES INC. AND MUST NOT BE PASSED ON TO ANY PERSON OR BODY NOT AUTHORIZED BY US TO DO SO. IF YOU ARE NOT THE ORIGINAL ADDRESSEE OF THIS DRAWING OR PART THEREOF, YOU MUST NOT USE IT WITHOUT OUR PERMISSION IN WRITING.



SITE PLAN
 71760 SQ M | 17.73 ACRE

CLIENT
 MINISTRY OF HEALTH & FAMILY WELFARE

EXECUTING AGENCY


ARCHITECTS


PROJECT
 SLEEP

DRAWING TITLE AUDITORIUM SITE PLAN

DRAWING NO.

NO.	SCALE	DATE	BY
1	AS SHOWN	2024-10-20	AS

DESIGNED BY	CHECKED BY	APPROVED BY
AS	AS	AS

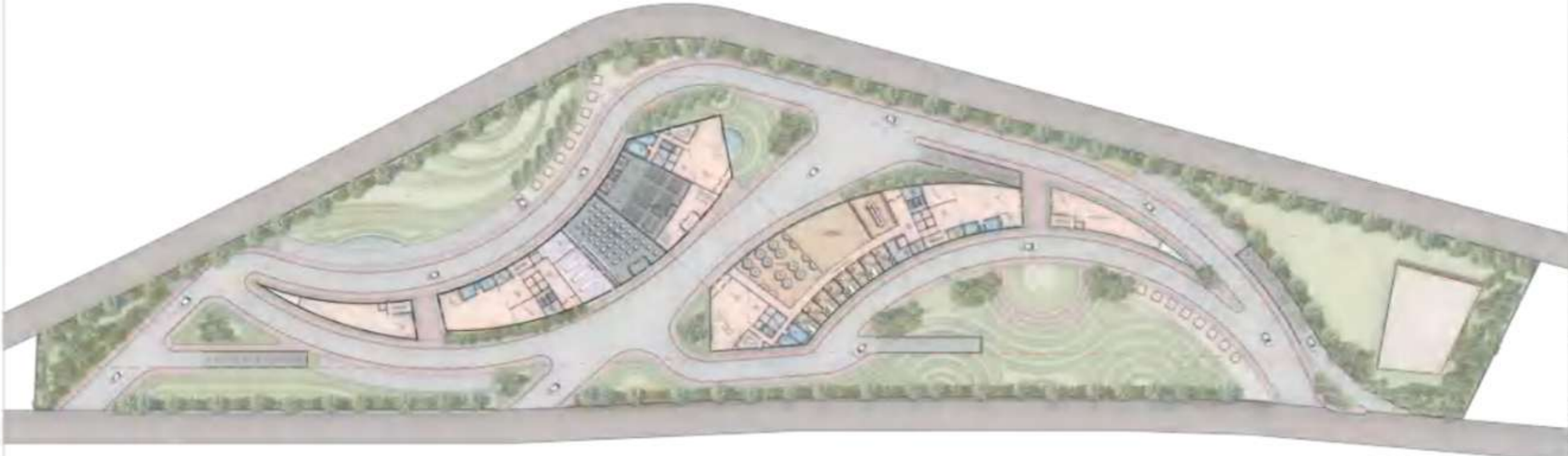
REVISION NO.	DESCRIPTION	DATE
01	ISSUED FOR PERMIT	2024-10-20

THIS DRAWING IS THE PROPERTY OF DESIGN ASSOCIATES INC. AND MUST NOT BE REPRODUCED OR COPIED IN ANY MANNER WITHOUT OUR WRITTEN PERMISSION. ANY UNAUTHORIZED REPRODUCTION OR COPIING OF THIS DRAWING IS STRICTLY PROHIBITED AND WILL BE PROSECUTED TO THE FULL EXTENT OF THE LAW.



NATIONAL HIGHWAYS LOGISTICS MANAGEMENT LIMITED

SITE PLAN



GROUND FLOOR PLAN

CLIENT
National Highways Logistics Management Limited (NHLML)

EXECUTING AGENCY
 HITES

ARCHITECTS
 DESIGN ASSOCIATES ARCHITECTURE

PROJECT
NHLML

DRAWING TITLE SITE PLAN

DRAWING NO.

NO.	DATE	BY	CHKD BY	APPD BY
01	2023/08/01	AD	AD	AD
02	2023/08/01	AD	AD	AD
03	2023/08/01	AD	AD	AD
04	2023/08/01	AD	AD	AD
05	2023/08/01	AD	AD	AD



Hitkarini college of architecture and town planning, Jabalpur
Rajiv Gandhi proudyogiki Vishwavidyalaya
Sem: IX | session: 2024-2025

CRITICAL APPRAISAL ON
AN ARCHITECTURAL FIRM
DESIGN ASSOCIATES

SUBMITTED TO: AR. PRIYANKA VIRHA

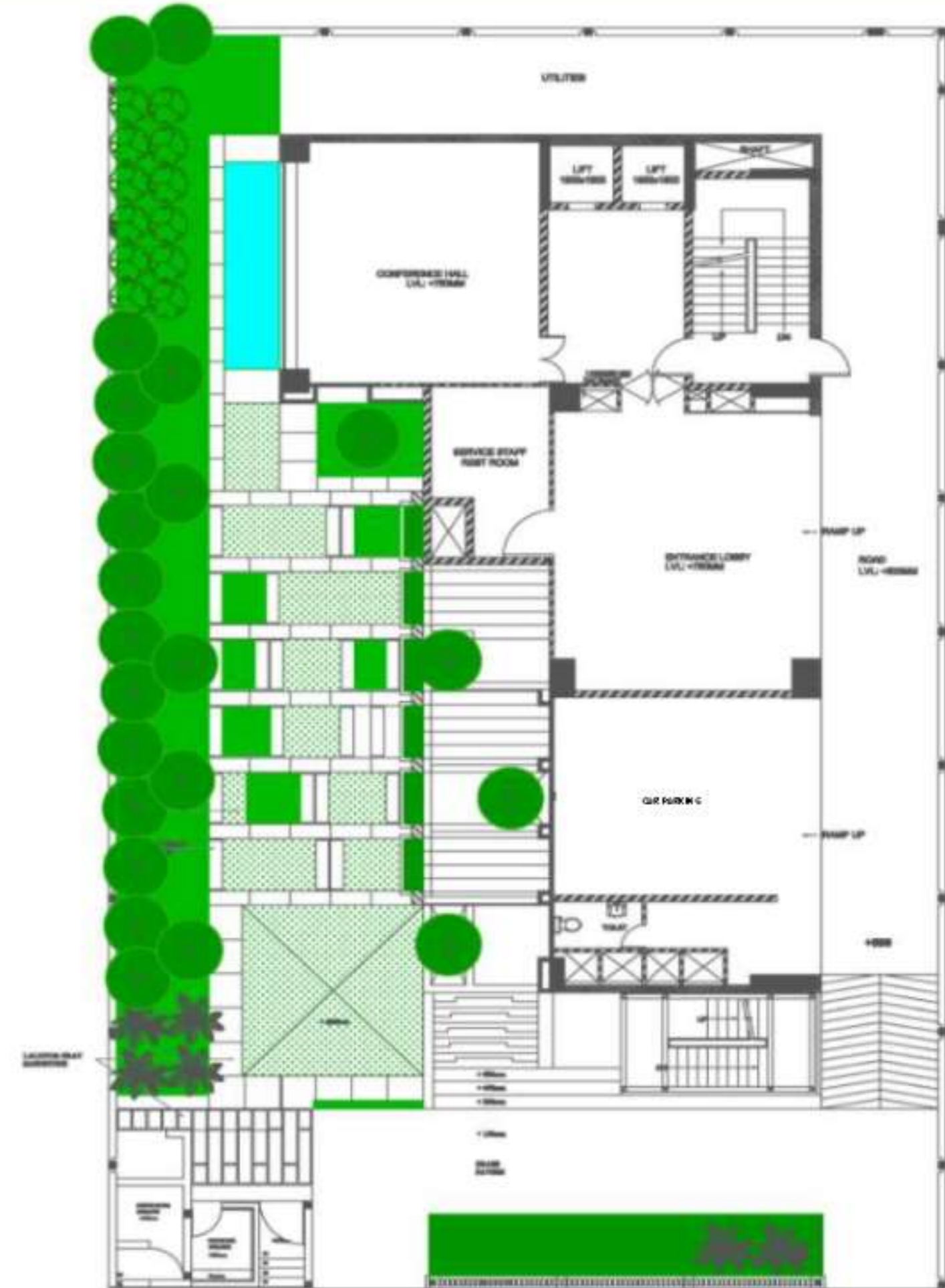
SUBMITTED BY:

ABOUT PROJECT -

PROJECT NAME	: DESIGN ASSOCIATES INC.
LOCATION	: NOIDA, UTTAR PRADESH.
SITE AREA	: 1000 SQM.
BUILT UP AREA	: 1002 SQM.
ARCHITECT	: DESIGN ASSOCIATES.
TYPOLGY	: COMMERCIAL OFFICE.
SVA GRIHA RATING	: 5 STAR.

INTRODUCTION-

Design Associates, Noida, is a reputable architectural firm that has made significant contributions to the field of architecture in India. While their designs demonstrate a commitment to sustainability and contextual responsiveness, improvement in terms of innovative design strategies, integration of technology, and social sustainability.



STILT FLOOR PLAN

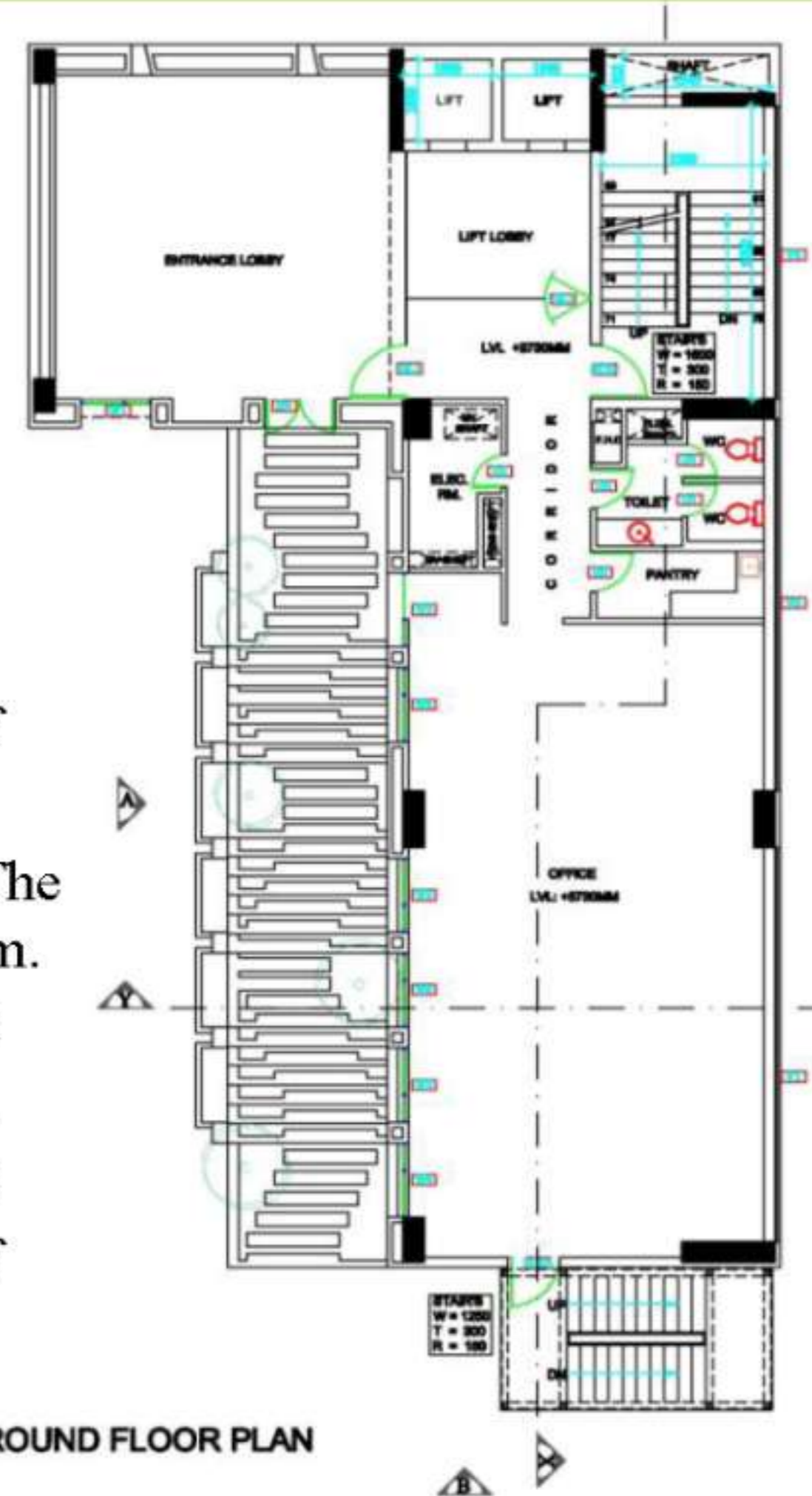
DESIGN STRATEGIES – STRENGTHS.

1. Design and planning :

- ❖ Over 94% Of Total Living Area Falls Under Daylit Zone.
- ❖ All regulatory occupied spaces are provided with openable windows and are well ventilated.
- ❖ Over 50% Of The Total Open Area On Site Is Soft Paved And Shaded.
- ❖ More Than 40 Trees Have Planted On Site.

2. Energy :

- ❖ The LPD (light power density) Of The Project Is 3.59 W/Sqm.
- ❖ The Thermal Efficiency Of The Building Envelope Is 114.38 W/Sqm.
- ❖ All Air-conditioners Installed In The Building Are Bee 5 Star Rated.
- ❖ 3 KW Solar Photovoltaic Panels Have Been Installed On The Roof Of The Building.



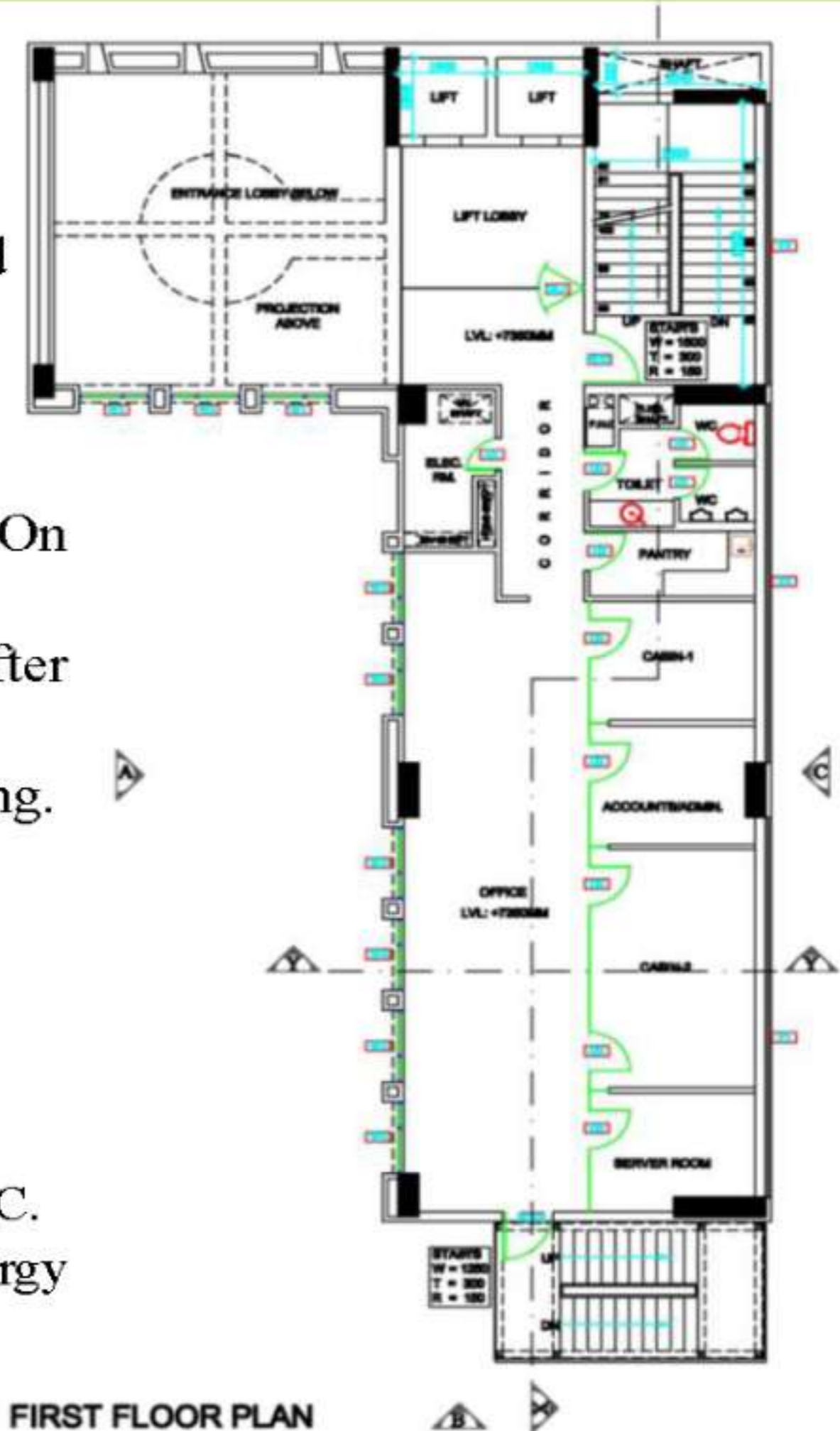
DESIGN STRATEGIES – STRENGTHS.

3. Water And Waste :

- ❖ The Use Of Low-flow Fixtures Project Has Reduced Building Water Demand By 70.63% As per GRIHA Norms.
- ❖ The Project Has Reduced Landscape Water Demand By More Than 57%
- ❖ Rainwater Storage Tank Of 6380 Liter Capacity .
- ❖ An Open To Sky Water Body Of 5000 Liter Capacity Have Been Provided On Site To Capture And Reuse Rainwater.
- ❖ A Recharge Pit Is Also Constructed On Site To Recharge Excess Rainwater After Passing It Through A Filtration System.
- ❖ Separate space for collection of dry wet and E waste produce within the building.
- ❖ Drip irrigation system with timer control are provided.

4. Materials

- ❖ Exposed Brick Surface Texture Finishing Has Been Used.
- ❖ PPC has been used for 100% structural, masonry and plaster works
- ❖ Surface texture finishing has been used in the project which does not contain any VOC.
- ❖ More Than 70% Of The Flooring Materials Installed In The Building Are Low Energy Materials .
- ❖ Low E glazing To ensure minimum heat gain and allow maximum daylight.



DESIGN STRATEGIES – STRENGTHS.

4. Lifestyle :

- ❖ There Is A Provision Of Dedicated Rest Room And Toilet For The Service Staff Within The Site.
- ❖ The Project Has Maintained A Kitchen Garden For Growing Fruits Vegetables For Their Own Use.
- ❖ Occupancy Sensors Have Been Installed In All Non-regularly Occupied Spaces Such As Conference Room, Toilets And Pantry.



LUNCH SPACE

Source - author.

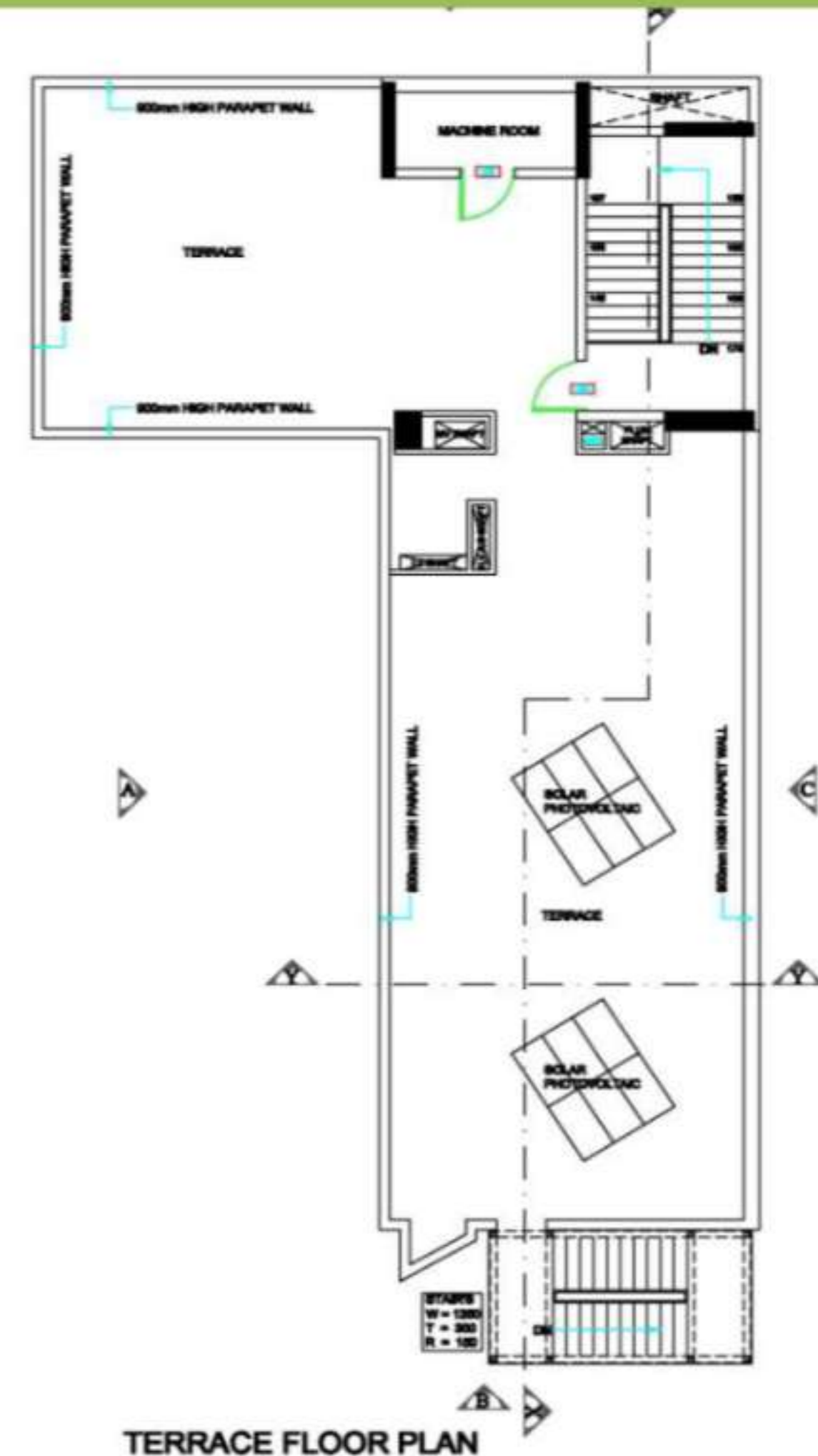
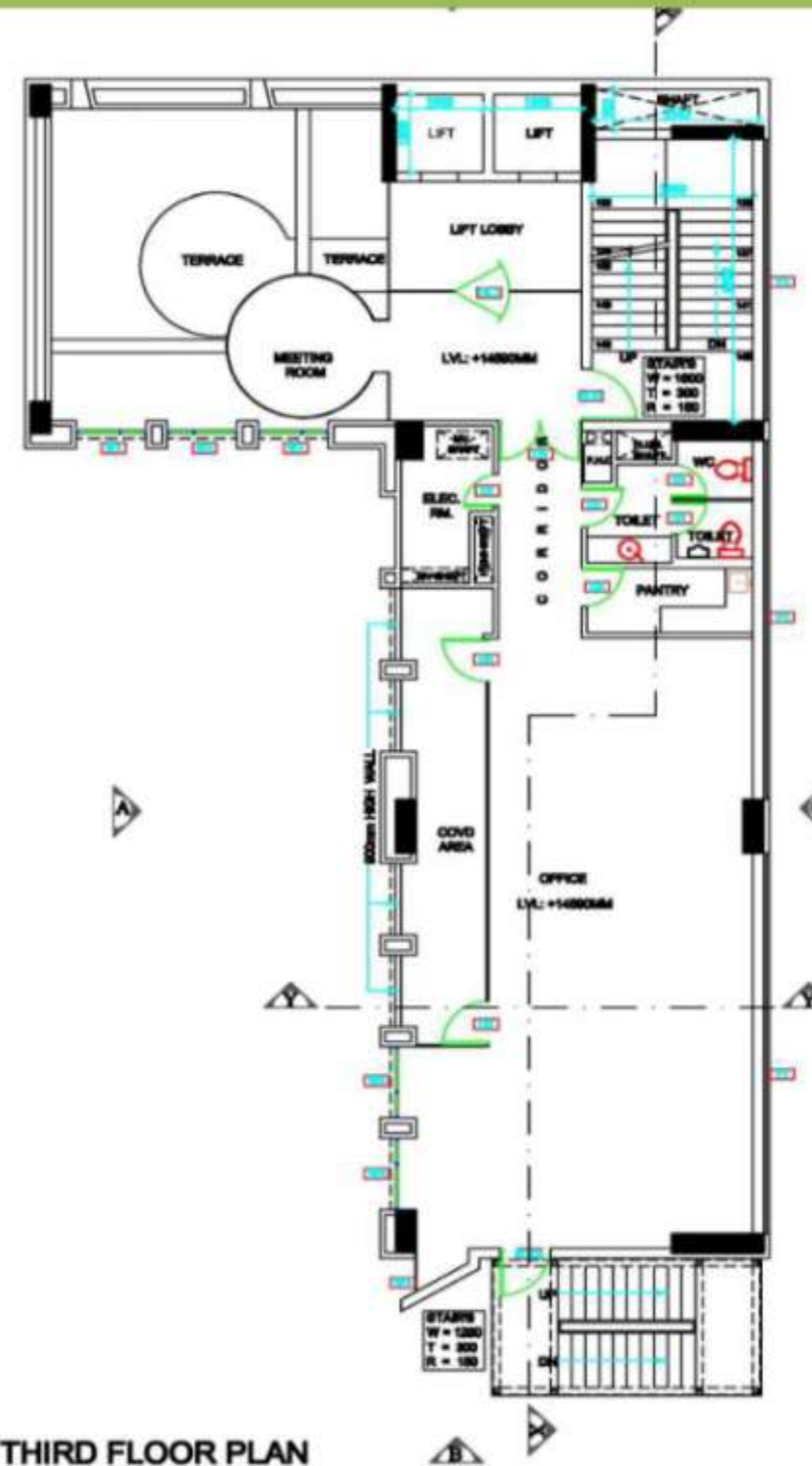
SECOND FLOOR PLAN

SMALL MEETING SPACE

Source - author.

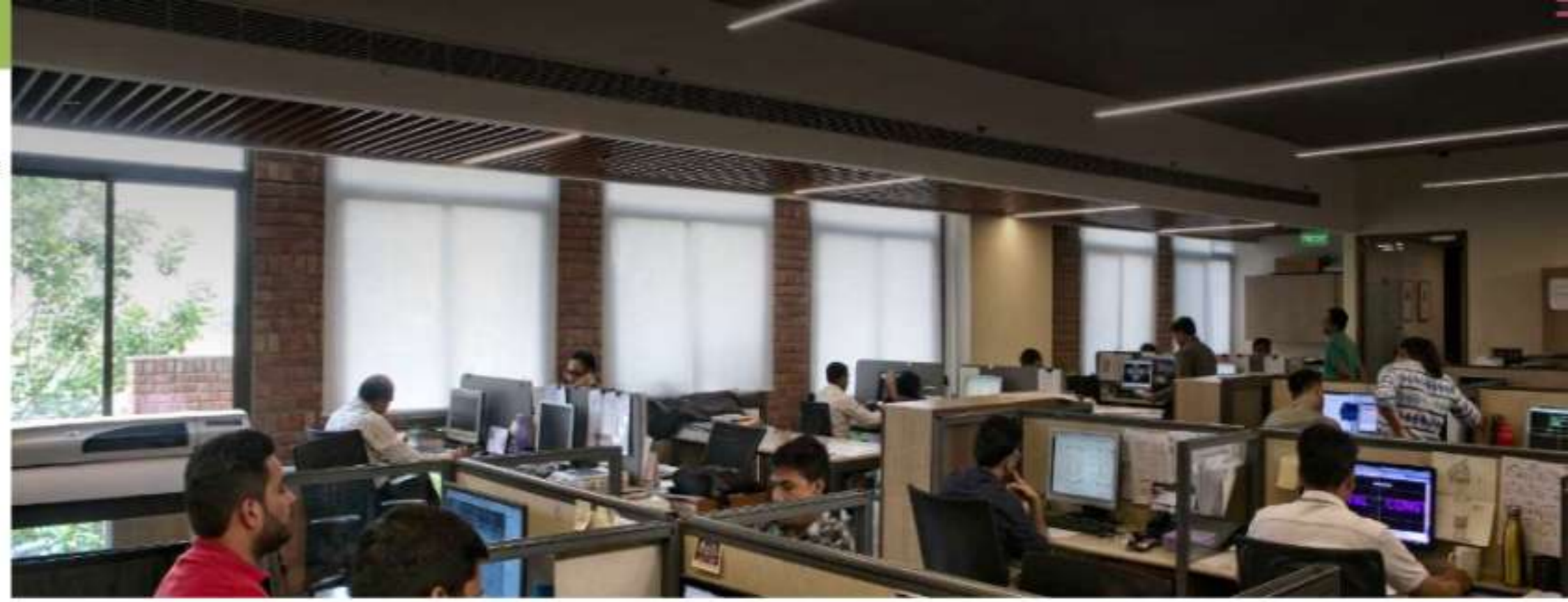
DESIGN STRATEGIES – WEEKNESS.

- ❖ No provision for solar water heaters and cooling devices.
- ❖ Amenities such as grocery stores convenience stores and pharmacy. Are not near the project.
- ❖ Use of low energy product for 70% of the paneling, partition, false ceiling. & furniture.
- ❖ Use of kiln fired bricks in wall application which required high amount of energy in manufacturing.
- ❖ Parking is not provided within the campus.



DESIGN STRATEGIES – OPPORTUNITIES.

- ❖ Solar water heaters can be provided to reduce the electrical consumption of water heaters.
- ❖ The office must provide private parking space To reduce traffic congestion.



STUDIOS

Source - author.

DESIGN STRATEGIES – THREATS.

- ❖ Since this building is certified 5 STARS by GRIHA Possibilities Of threats are very less / Negligible.



GARDEN



CONFERENCE HALL

Source - author.

CONCLUSION.

- ❖ "Based on the SWOT analysis, it is evident that 5-star rated building by GRIHA has several strengths that contribute to its success, including its sustainable design, energy-efficient systems.
- ❖ However, the analysis also highlights some weaknesses, such as limited parking facilities And lack of local amenities.
- ❖ To maintain its competitive edge and 5-star rating, the building management should focus on:
 - ❖ 1. Continuously monitoring and improving energy efficiency and sustainability features.
 - ❖ 2. Exploring opportunities for renewable energy integration and reducing carbon footprint.
 - ❖ 3. Enhancing tenant experience through amenities and services.



VERTICAL GARDEN

Source - author.